

North Side Bark Proposals

FBD Miami and Oxford Parks and Rec

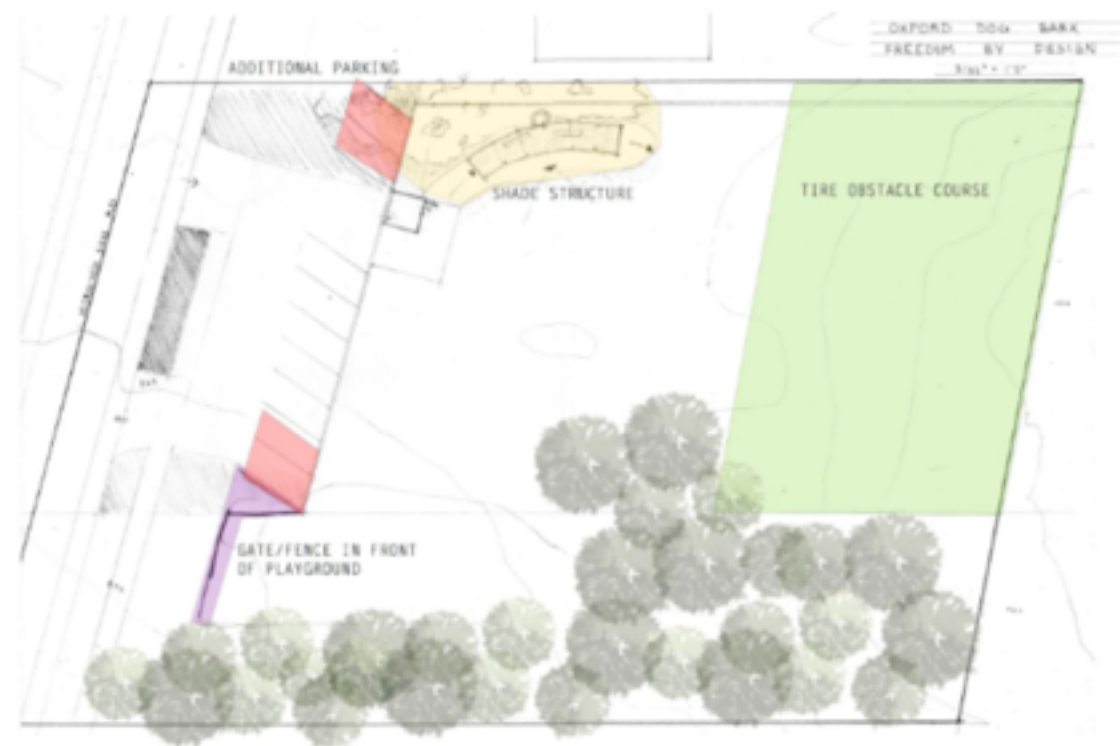
**Master
Plan**

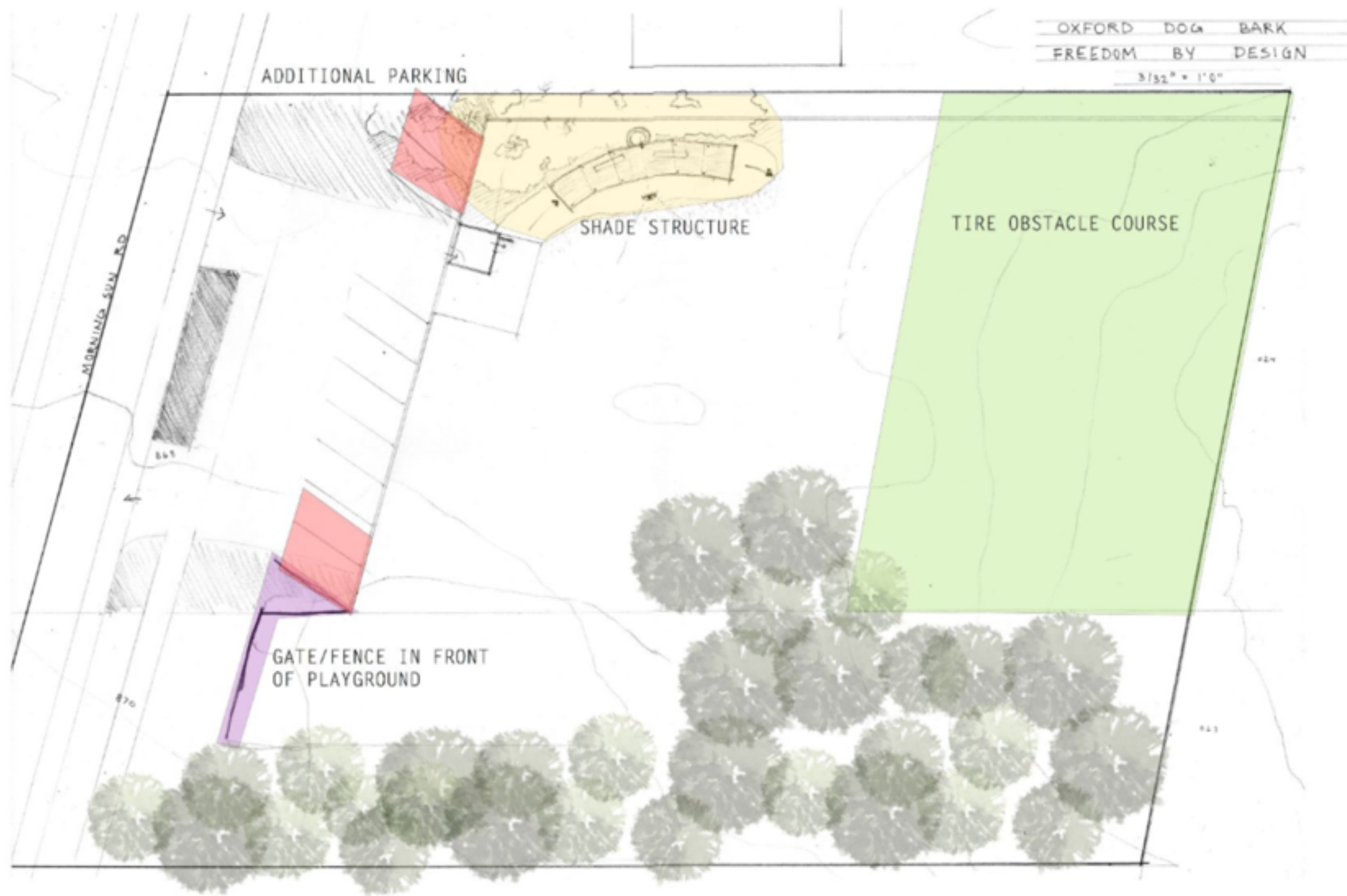
**Possible
Projects**

Materials

**Next
steps**

Master Plan





Possible Projects

Parking and Fencing

Utilize available space for parking
Protect children playing at park by adding a fence on the west side

Shade Structure

Provide shade for dog owners and dogs, while controlling water collection/distribution

Obstacle course

Encourage use of entire park by offering new ways to play

**Parking and
Fencing**

**Shade
Structure**

**Obstacle
Course**



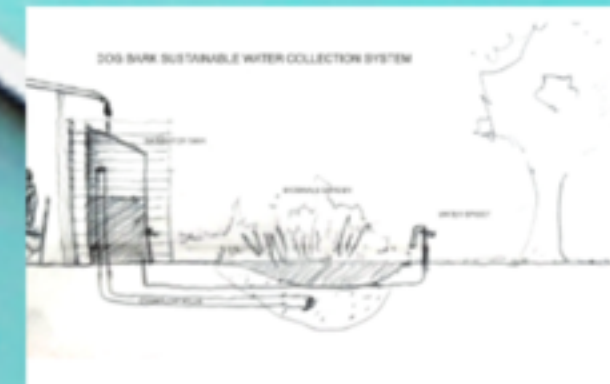
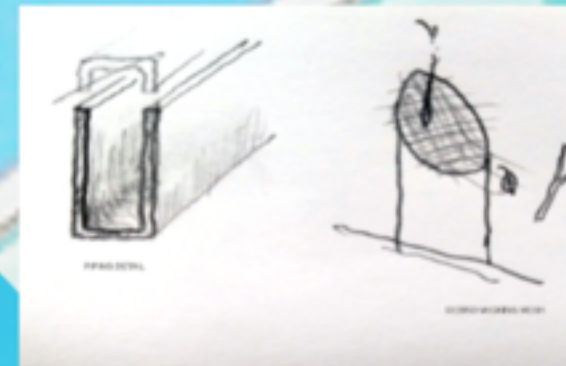
Parking and Fencing



Shade Structure



- Ease of construction
- Low maintenance
- Provide shade
- Collect and distribute water to mitigate mud
- Dog wash station



Obstacle Course Materials



Pine Mulch



Tough
Capped on all four sides



Enduring
Resists stains, scratches and fading



Durable
Resists mold, rot, decay, and moisture damage



Beautiful
Texture of real wood graining



Low Maintenance
No annual sealing or staining



Protected
30-year Fade & Stain and 25-year Limited Warranty

NORTH SIDE BARK MATERIALS



Galvanized Steel Roofing

Welded steel tube frame



Walnut wood detailing

Tire Chips



Color schemes



Next steps

