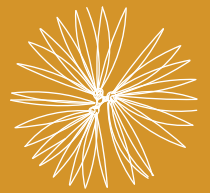
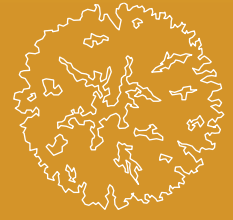


Path for Safe Shelter Savannah



FREEDOM BY DESIGN
SCAD



Elizabeth
Schminke
Design Mentor



Neil Dawson
Design Mentor



David Newland
Construction
Mentor



Table of Content

About The Path Project 03
About Us 05
First Site Visit to Safe Shelter 07
Rain Site Visit to Safe Shelter 09
Design Charette..... 11
Site Survey..... 13
Design Proposal..... 15
Custom Concrete Pavers 17
Rain Barrels..... 19
Landscaping 21
Build Day 1..... 23
Build Day 2..... 27
Build Day 3..... 31
Final Results..... 35
Expenses 39
Ever Since 40

PROGRAMS & SERVICES



24-HOUR DOMESTIC VIOLENCE HOTLINE

24 hours a day, 7 days a week, 365 days a year, SAFE Shelter is available to answer questions, provide support, safety planning, and referrals. Calls are always confidential and we will never call you back.

24-HOUR CRISIS LINE:
(912) 629-8888



SAFE SHELTER HOUSE

Our SAFE Shelter house offers confidential, secure, temporary housing for women and children that are victims of domestic violence. We also provide shelter for men in need of safe temporary housing at an alternate location.

We firmly believe that no one deserves to live in fear. Everyone, regardless of sex, race, culture, or religion, deserves to be treated with respect and compassion. We believe all victims of intimate partner violence deserve a chance to live violence free. SAFE Shelter is certified through the Governor's Office of Children and Families and is a United Way Agency.



OUTREACH PROGRAM / LEGAL ADVOCACY

Our Outreach Program is for victims that do not require shelter but need legal advocacy and other advice. The Outreach Program advocates will assist with preparing Temporary Protective Orders (TPOs), meet you at the courthouse to file the order, be with you when you have been assigned a Superior Court Judge that will hear your request for protection in chambers (not open court to set a hearing within 30 days of filing. Every Outreach client is provided a pro bono attorney for the hearing.

SAFE Shelter Outreach Program
7395 Hodgson Memorial Drive, Suite 203
(912) 651-0004



BI-LINGUAL ADVOCACY

SAFE Shelter understands that the Savannah community has a large Spanish-speaking population and has bi-lingual advocates on staff. Our bi-lingual advocate works out of our Outreach Program office located at 7395 Hodgson Memorial Drive, Suite 203. Additionally, SAFE Shelter's 24-hour hotline subscribes to a language line, which is used to translate if you call after hours and one of our bi-lingual advocates are not available.



FOLLOW-UP/AFTER CARE PROGRAM

Offered to families / individuals who are leaving the shelter. We provide home visits and monthly support groups for two years. An on-site Pod is used to store household items and furniture for those families / individuals who are usually starting all over again. The program can provide rent / utility deposit assistance, groceries, and bus tickets as well. Currently, 95% of the victims in the follow-up program have not returned to their abusers.



CHILD & FAMILY ADVOCACY

We understand that there may be more than one victim when it comes to domestic violence and that is why we have a dedicated Child Advocate on staff to also ensure their needs are met. The shelter's Child Advocate provides opportunities for them to express themselves through art, writing and weekly support groups.



CAMP R.O.C.K.

All kids need a chance to just be kids. Especially children that have lived through domestic violence. SAFE Shelter's Camp R.O.C.K. is for children ages 5 - 17 who have been directly affected by domestic violence.

Camp R.O.C.K. stands for Recognizing Our Children's 'K'reativity and offers nine, week-long indoor and outdoor camp sessions from June - July.



COMMUNITY EDUCATION

SAFE Shelter provides community education programs all across the metro Savannah area as we know a community that speaks out against domestic violence is the key to helping end the abuse.



HOW CAN YOU HELP?

[Learn more](#)
[Volunteer](#)
[Donate](#)
[Contact us](#)

About SAFE Shelter

The mission of SAFE Shelter Center for Domestic Violence Services is to prevent domestic violence, protect victims and promote change in lives, families and our community.

Since 1979, SAFE Shelter has been Savannah's only shelter dedicated to victims of intimate partner violence and their underage children. Open 24-hours a day, 7 days a week, the Shelter provides safe, confidential services to all victims of domestic violence.

SAFE Shelter & SCAD FBD

This project is Freedom By Design SCAD's first completed and built project. We were able to dive into site visits and begin planning for fundraising since the summer mostly because of the FBD SCAD executive committee of 2016-2017.



Our previous Director, Nicole Winkler, and Project Manager Anthony Nicholas put our 2017-2018 excom in contact with Cheryl Branch from Safe Shelter and served as a constant source of support on our journey of completing the Path for Safe Shelter.





The Team

SCAD FBD EX-COM 2017-18



Yvette De Soto
Director
BFA. Arch. 2018



Ashley Skidmore
Project Manager
BFA. Arch. 2018



Carole Pacheco
Faculty Advisor
AIA



Hanna Milewski
Fundraising
BFA. Arch 2019



Akhil Hemmath
Historian
MFA. Arch. 2019



Ashley Joos
Treasurer
BFA. Arch 2019



First Site Visit to Safe Shelter

The backyard at SAFE Shelter is highly used by both women and their children. Even Though the home is at a secure and undisclosed location, residents can use exterior amenities such as this yard, the playground and the gazebo it encompasses.

Cheryl Branch led us through our first visit to Safe Shelter, and we became aware of the sensitivity an environment shielding people from domestic abuse needs to have. Because of this secure environment, the place that struck most contrast was Safe Shelter's backyard a highly used and ample exterior space that had very noticeable maintenance issues problematic to residents and children.

Flooding Issues



Restricted Access & Experience



Rain Site Visit to Safe Shelter

In further efforts to understand the nature of the problem of Exterior conditions at Safe Shelter we went on a rain site visit. The main problems we encountered were:

- Clogged rain gutters
- Excessive water being released in the middle of a pedestrian circulation path
- No natural drainage on pedestrian path resulting in large muddy puddles
- Even though it was raining, residents still ventured outside to the gazebo and walked through the mud and water pooling.



Seeing the issues up close



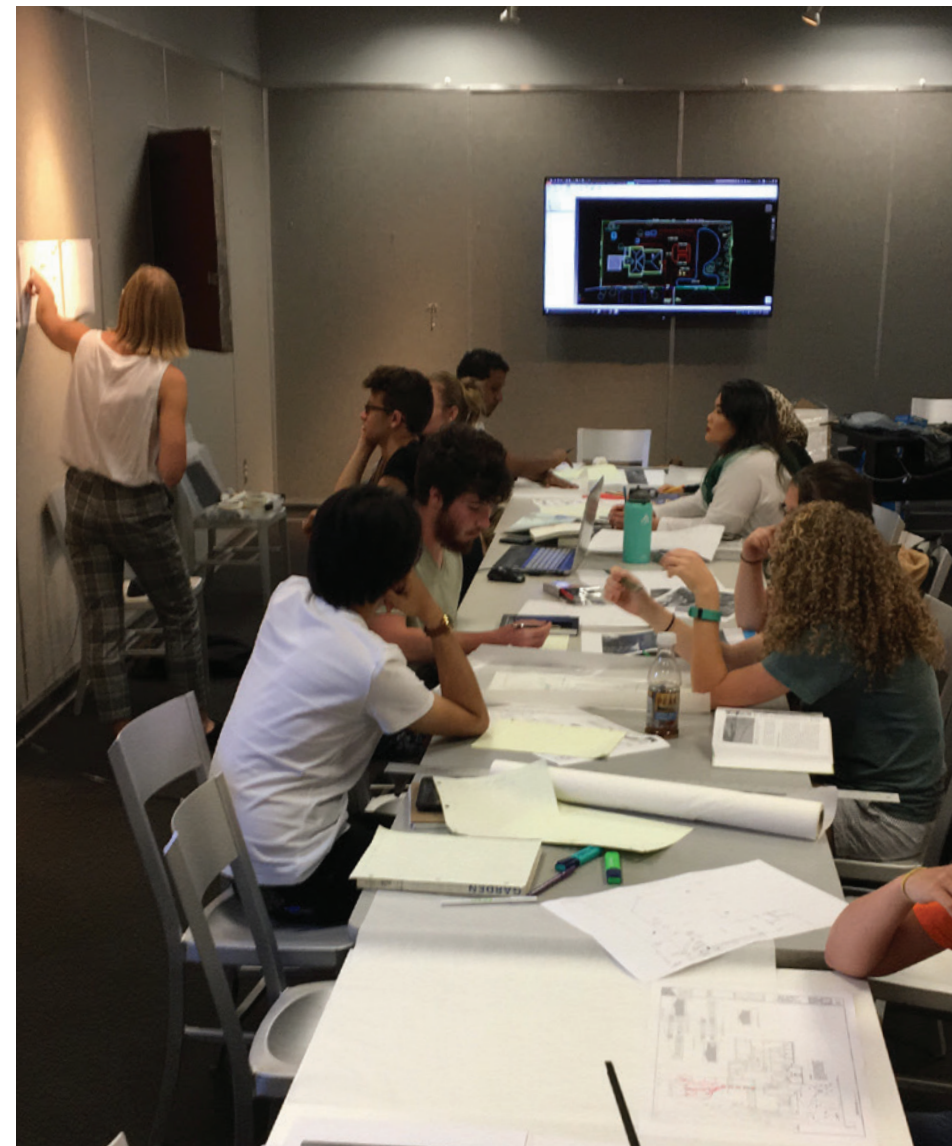
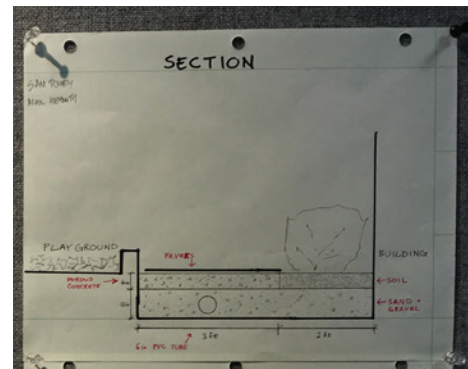
To start solving them



Design Charrette

With our first Design Charette we reached out to the student body for them to become familiar with Safe Shelter. It was very important to begin establishing awareness of safe shelter and our efforts to create a path and minimize the flooding to the path.

Students interested in these early stages tended to stay with most phases of the project up to completion. Many designs that came out of this first ideation were further researched and/or prototyped by the FBD Excom and greatly aided us in our final proposal and construction.

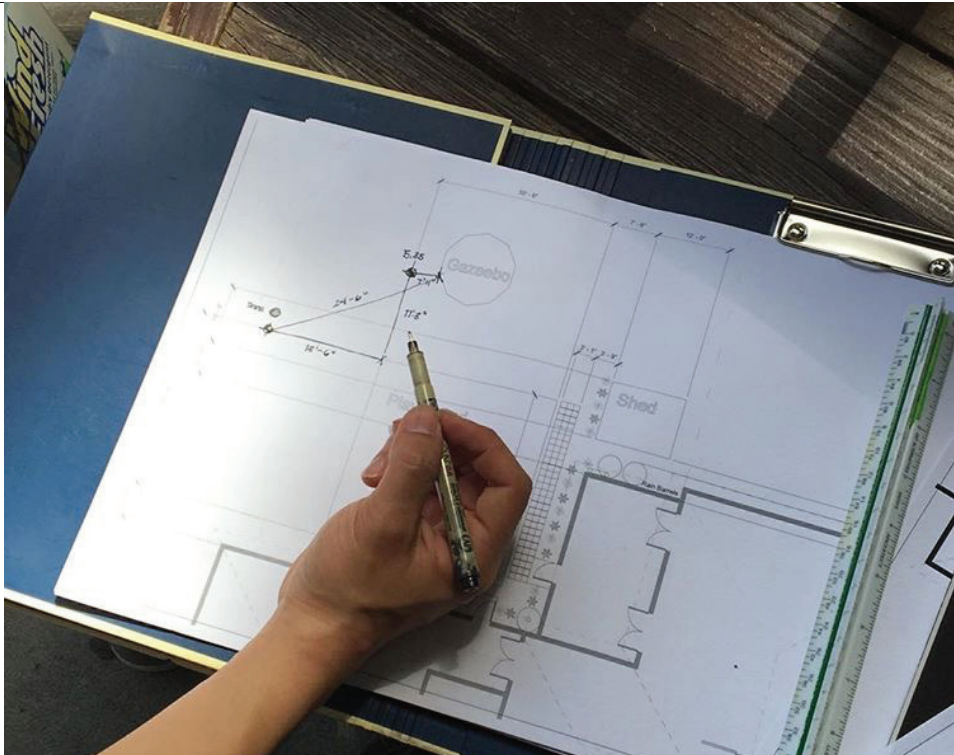




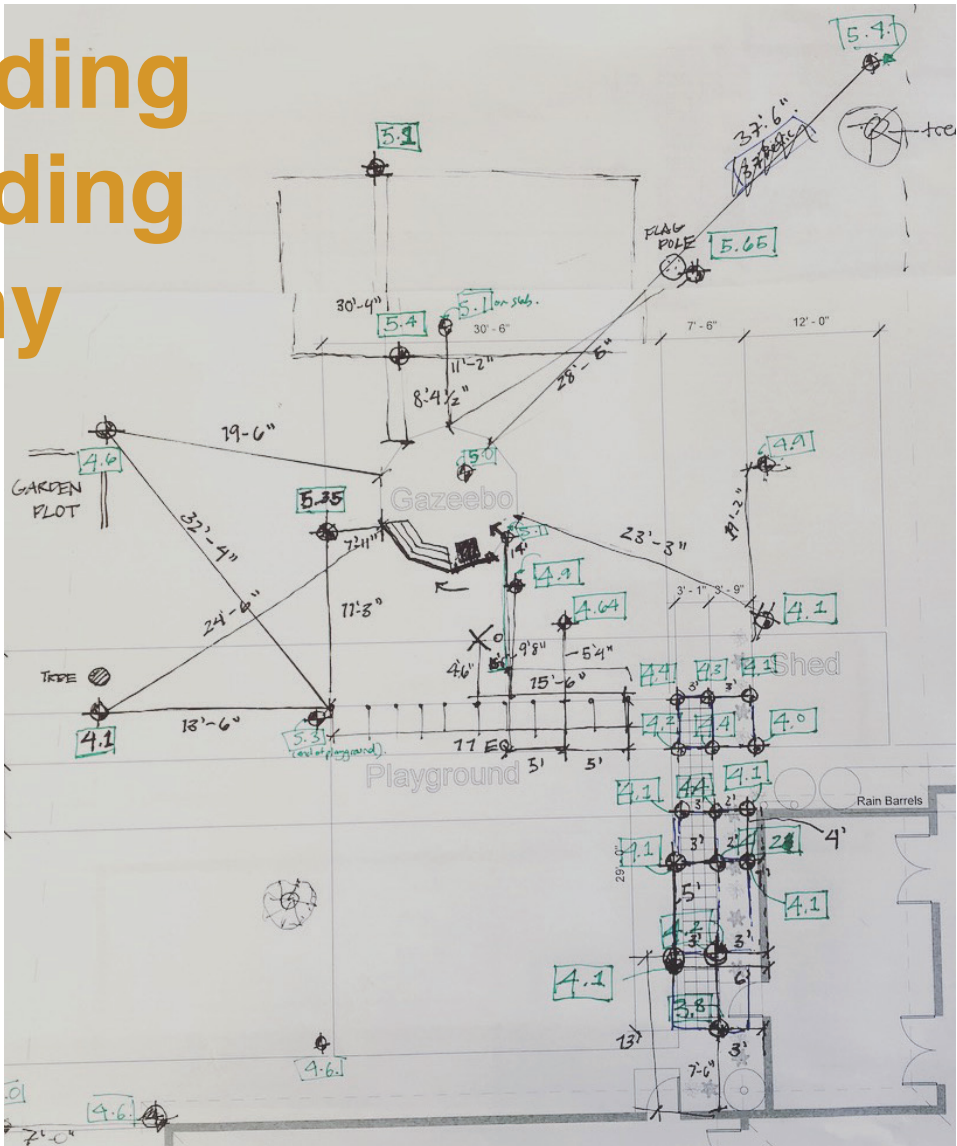
Site Survey

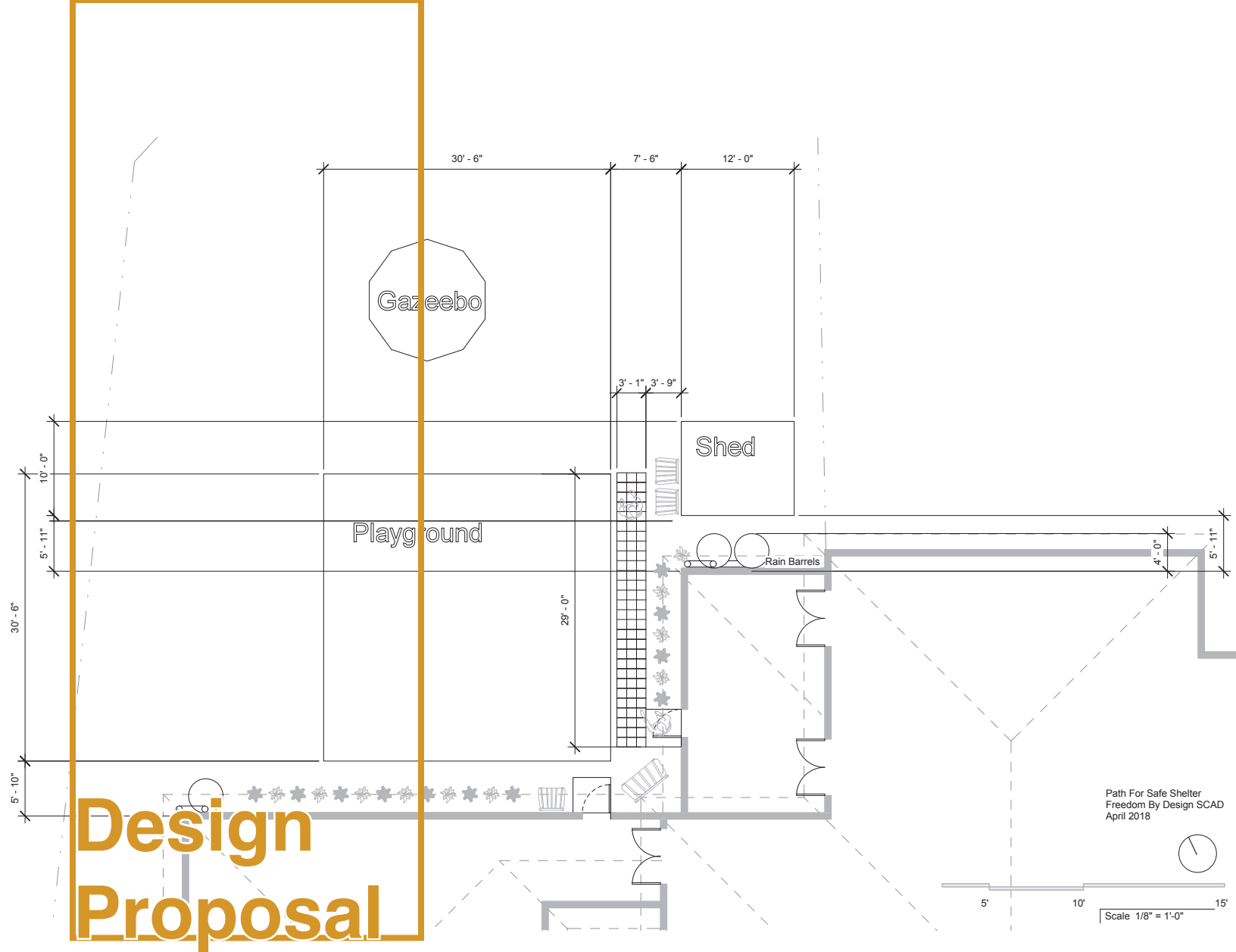
Since flooding is closely tied to site drainage, our design and construction mentors arranged for our team to have a site survey at Safe Shelter. This provided a unique experience for students to record and understand the site's topography.

We then calculated the cubic footage of fill dirt we would require to reshape the landscaping of the yard to optimize drainage in a way that would minimally affect residents using the path.



Understanding and Recording Topography





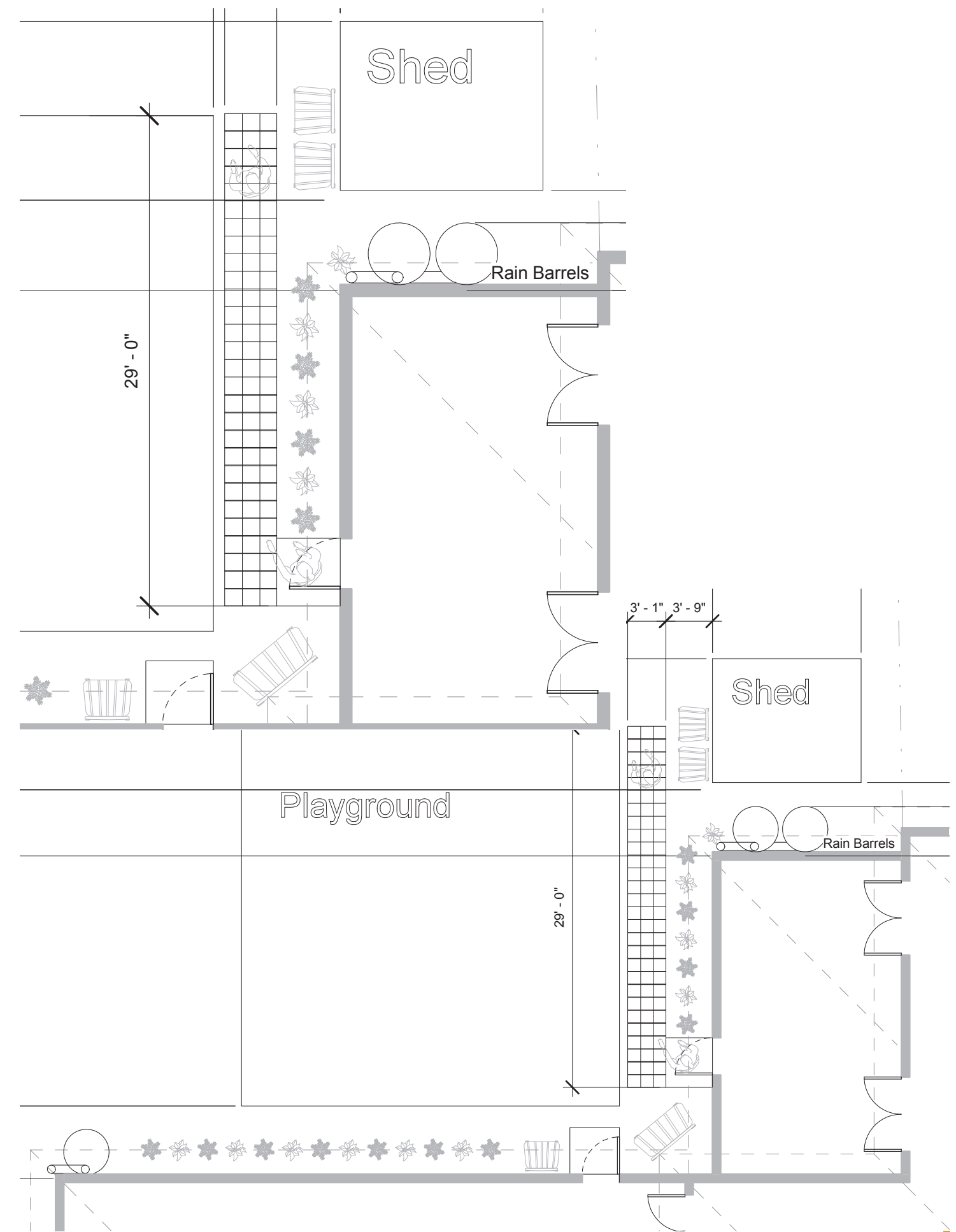
Design Proposal

Our team decided to concentrate on three interventions to the site:

1. Create a paved path with key custom pavers to make the experience thoughtful and unique to the residents and the children.
2. Deviate the downspout of water away from the path end via rain barrels.
3. Landscape the edge of the path and connect the overflow water from the barrels to select plants to control flooding.

Due to a combination of budgeting issues and looking forward to potential future build proposals for SCAD FBD we decided not to extend the path all the way to the Gazebo.

A potential future project could be a larger yard pavilion better for the multitude of purposes the women of safe shelter use this small gazebo now for.



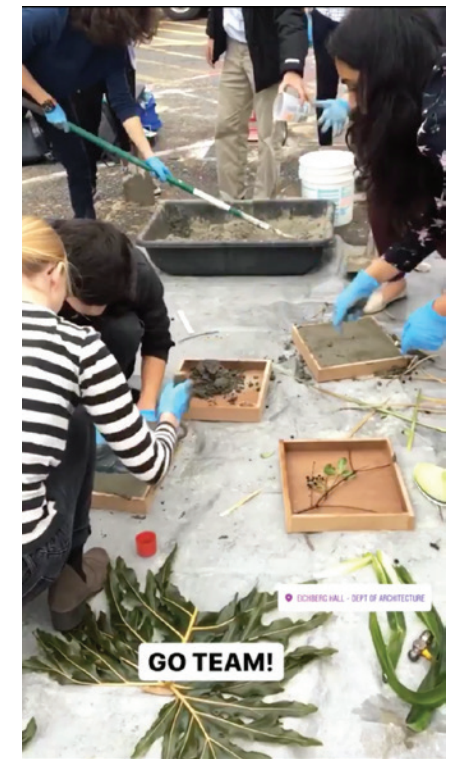
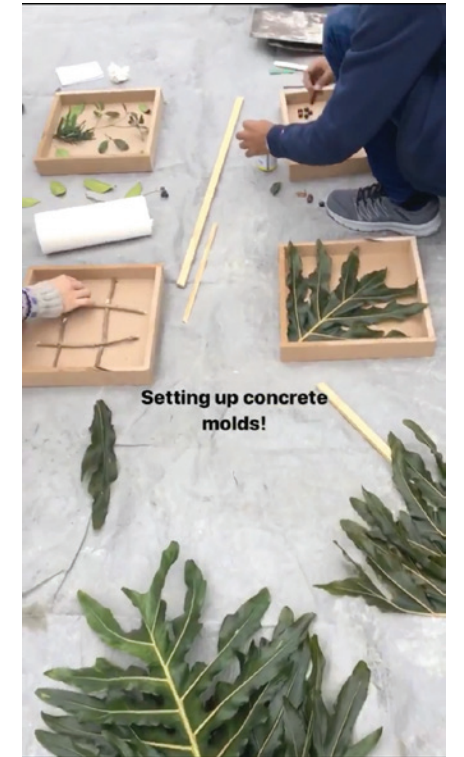


Custom Concrete Pavers

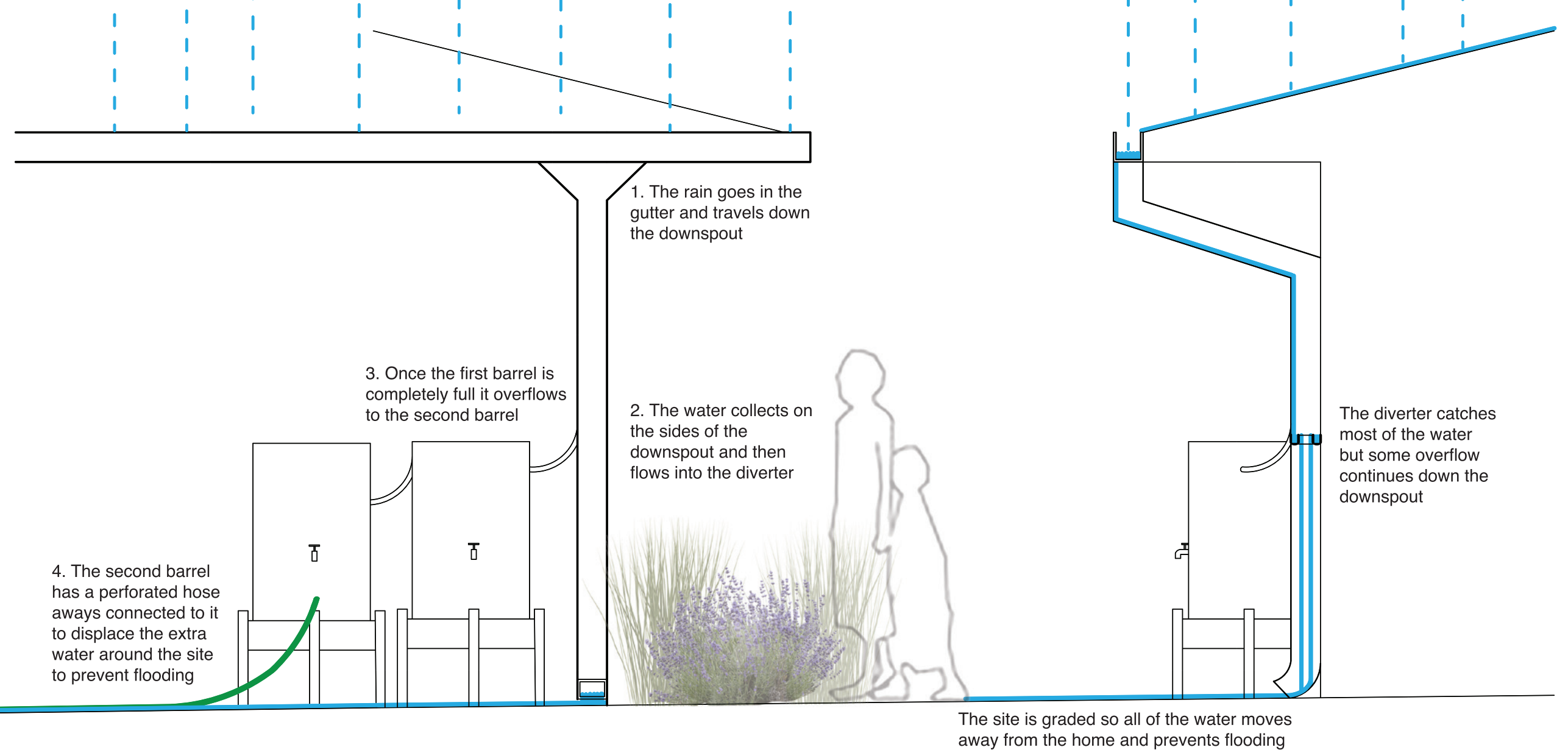
Providing students with exposure to freely experiment with different properties of concrete was one of our goals as a chapter.

We accomplished this by hosting multiple concrete play days, through which we also refined our ultimate patterns for the concrete pavers.

The ultimate imprints were the Safe Shelter Logo, the purple ribbon for domestic violence awareness, and three different scales of footprints.



Rain Barrels



Rain Barrels are a great solution to control excess water released from gutter spouts. They are also an easy way to retain rainwater and then choose what it should be used for.

For our Safe Shelter Path, we installed the rain barrels where the gutter spout location was most damaging pedestrian access to the yard. We then rigged the harvested water to drain right into a channel of water retaining plants. We are very grateful to Moon River Company, that donated three large drums which we then converted to rain barrels and attached on site.

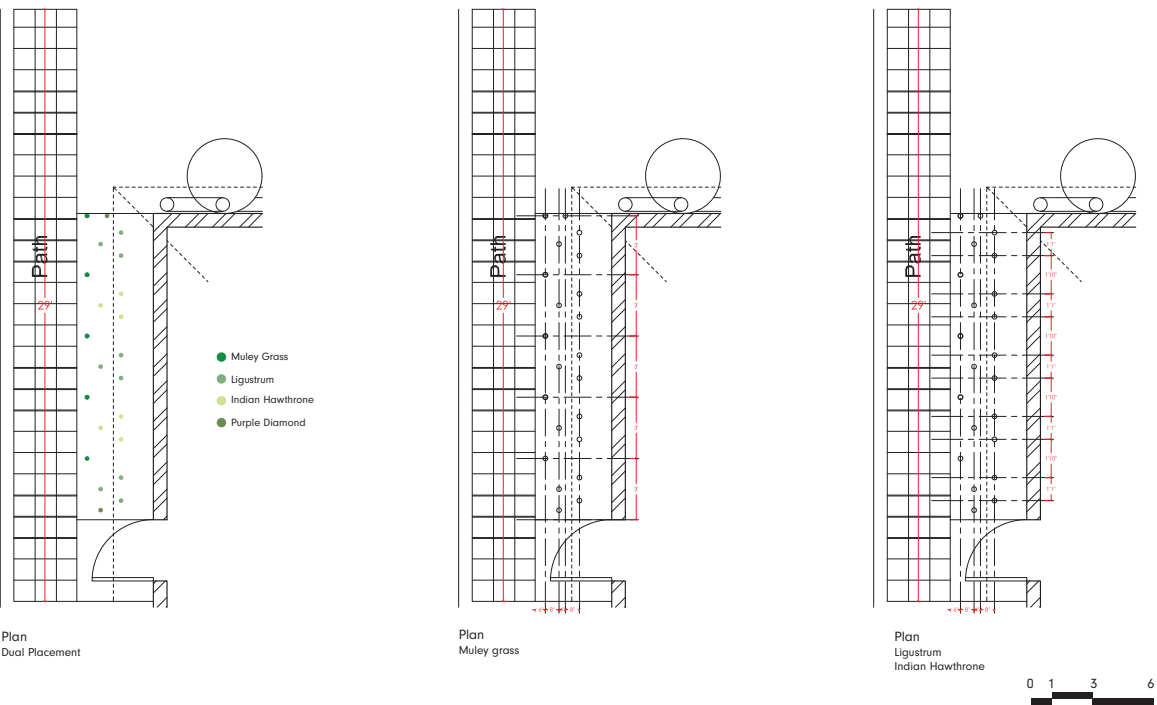
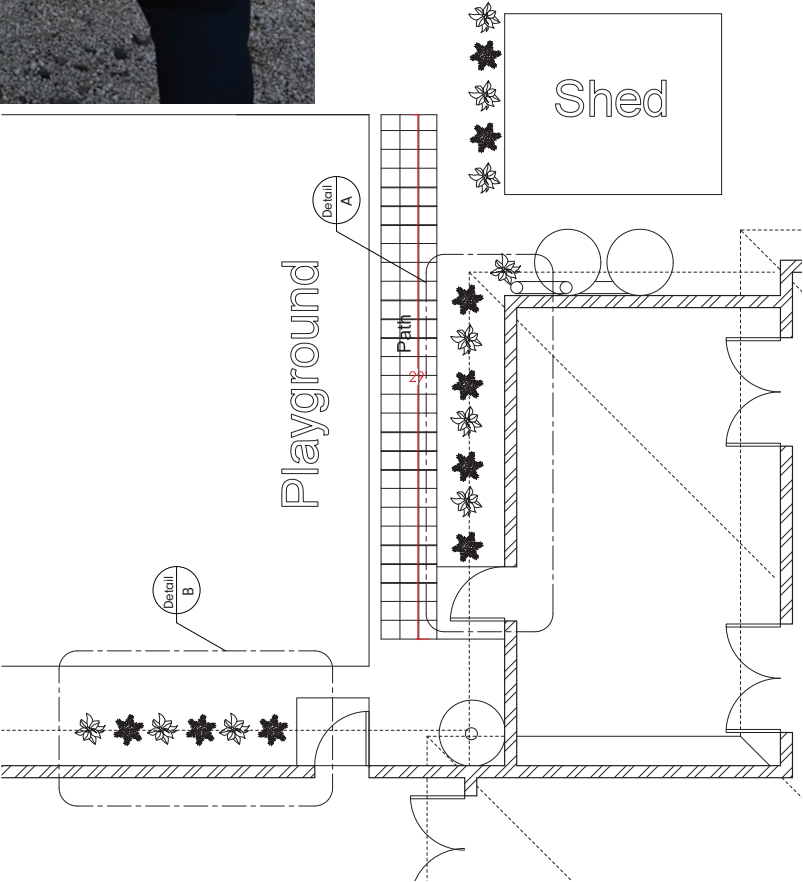


Land-scaping



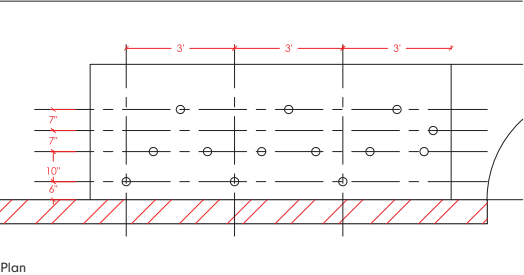
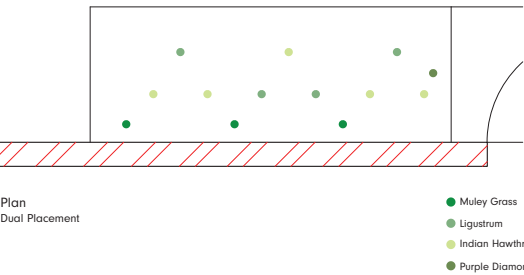
Our landscaping research consisted of finding regional plants that require minimal maintenance and were consistent with the solar and water exposure that lining the path would have.

We had the great local nurseries as a resource not just in our acquisition of the plants, but also for advice in how to plant them.

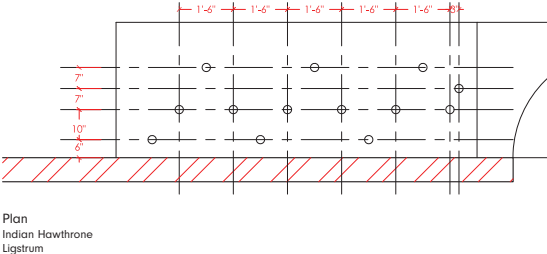
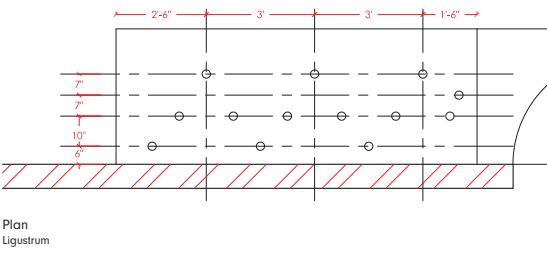


FBD - Safe Shelter

Detail A
Landscape Proposal



FBD - Safe Shelter



Detail B
Landscape Proposal



Build
Day
1

Site Prep:

Filling and re-shaping existing topo



BUILD DAY

FREEDOM BY DESIGN
SCAD

- MAY 4TH - DEMO AND SITE PREPARATION
- MAY 5TH - PATH INSTALL
- MAY 11TH - RAIN BARREL
- MAY 12TH - LANDSCAPE

MANDATORY INTEREST MEETING

TUESDAY MAY 1ST
EICHBERG CRIT ROOM 203
AT 4:45 PM

AXP HOURS FOR PARTICIPATION







Build
Day
2

Path Install







Build
Day
3

Land- scaping and Rain Barrel In- stall





Final Shots





Thank You!

To everyone
who supported
the 2017-2018
FBD SCAD
Path for
Safe Shelter!

