

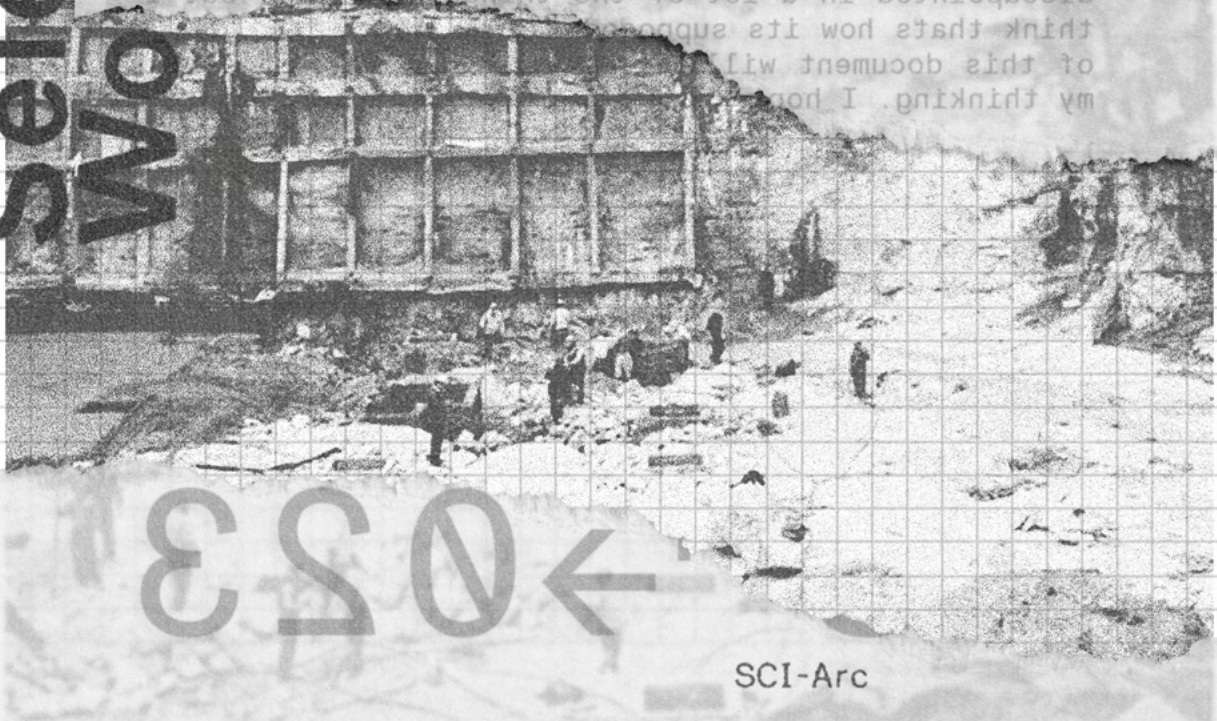
JL

Vol. 01

HOLLAND SEROPIAN Works

This is a compilation of my works done thus far in my academic career. Looking back I am both impressed and disappointed in a lot of the things I have done, but I think that's how its supposed to be. I hope you think of this document with my thinking. I hope you think that's how its supposed to be.

Selected Works



053 ←

SCI-Arc

JL



EDUCATION

SCI-Arc

2021 - 2025 Bachelors of Architecture

Harvard GSD

2023 Urban Planning Design Discovery

EXPERIENCE

Morphosis

Design Intern - full time

January - August 2024 // Culver City, CA

Working on the project design team under Eui - Sung Yi on multiple cultural and civic projects internationally. Projects currently underway as well as competition entries in the United States and Saudi Arabia.

PATTERNS

Architectural Designer - full time

Summer + Winter 2022 // West Hollywood, CA

Participated in multiple projects such as Cadigan campus building for Claremont Graduate University, Karma Kandara developments in Bali, Cuidar community center in Argentina, All for Health offices and clinic in Glendale, various large scale projects in Saudi Arabia, and a private home in the Pacific Palisades. Work included construction detail drawings, physical model making, animations & renders, as well as design development in 2D & 3D.

Kevin Kenny Builders +

Apprentice Contractor // full-time

2017 - 2019 // Pleasanton, CA

Full time apprenticeship working under Kevin Kenny in the planning and construction of high end custom homes in the San Francisco Bay Area. Working in every stage of construction, entrusted to oversee and manage construction crews of various trades



EXHIBITIONS

SCI-Arc Spring Show

2022, 2023, 2024 // Work featured at SCI-Arc

Selected to participate in the SCI-Arc end of the year exhibition with multiple works and writings from 7 distinct projects featured.

Pando Days 2021

2021 // Work featured & presented at Pando Populus

Selected to represent SCI-Arc in the Pando Populus 2021 event in the shelter category. Projects are featured from 10 universities focused on innovative solutions to the largest sustainability issues facing LA county and was presented before Los Angeles officials.

SKILLS

Rhino // Revit // V-ray // Photoshop // Illustrator // Indesign // C4D // grasshopper // Finish Carpentry // Framing // Wood Working // Metal Working // Modeling // FDM + Resin Printing // CNC Milling // Heavy Equipment // Landscaping // Masonry // Laser Cutting // Ceramics

AWARDS

Spectacular⁺ - Design Studio Award

2024

selected to represent the best studio project at SCI-Arc across all programs at the school for "LAX Terminus" awarded alongside partner Peihao Jin.

A + D Museum Design Award

2023

jury selected winner of the 2023 student design award category for studio project "incongruous whole". awarded alongside partner Zamen Lin.

curriculum vitae

CV

CV

hopefully of interest

SCI-Arc

holland seropian

o-

-o

holland seropian

portfolio

└┘

└┘

come find me

00

01

if you think you can

contact

p. +1 . 9 2 5 . 8 5 8 . 0 5 2 4
 e. hollandseropian@gmail.com
 w. www.hollandseropian.com
 a. 950 E 3rd street, los angeles

└┘

SCI-ARC
 fall 2021 - fall 2024

└┘

not so tabula raza

some silly names

Contents

studio

02

03

DS5000// terminus

04

DS1040// salamander

24

AS2438// mirage

42

AS2765// catenary

54

01

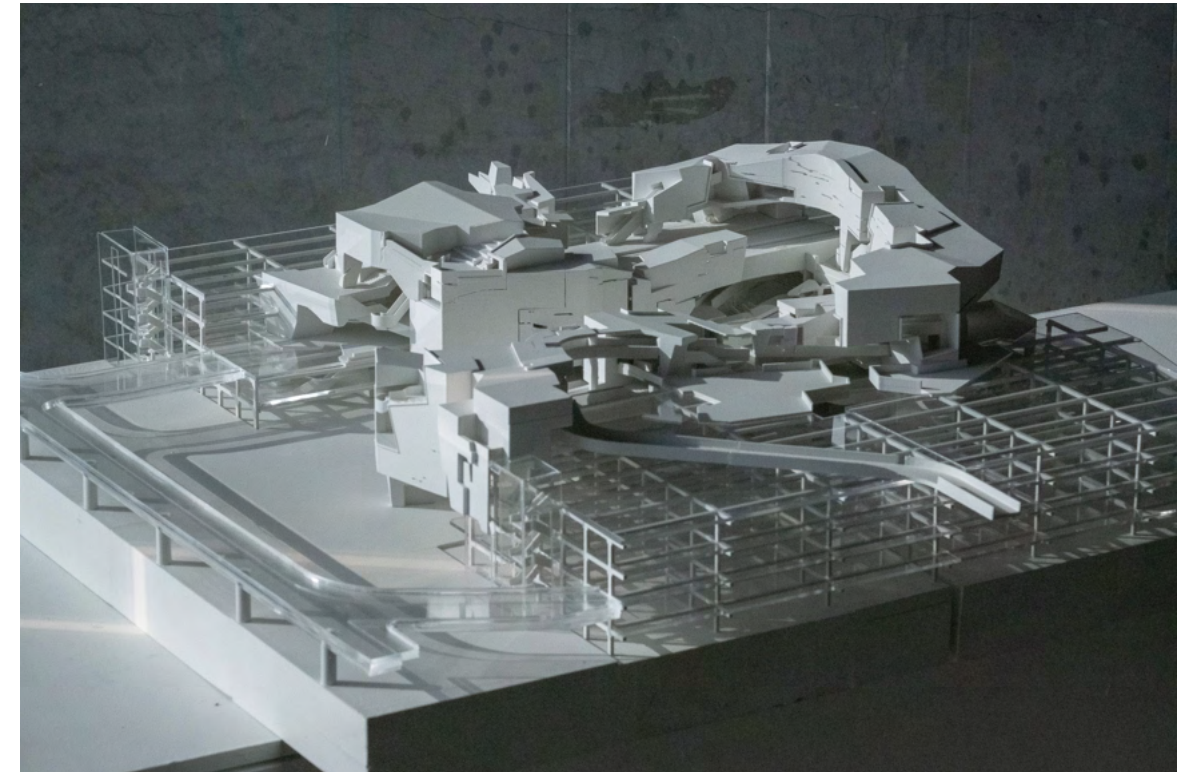
TERMINUS

DS5000 CONNECTIVE FORMS OF ASSEMBLY

are people marbles?

04

05



im not so sure

// physical model

Location: Los Angeles International Airport

Instructor: Dwayne Oyler

Type: Train Station + Exhibition Galleries

Team: Peihao Jin

Spectacular - Design Studio Award 2024

Selected work for exhibition at SCI-Arc Spring Show 2023



Beginning with the idea of the marble run as an allegorical system for a circulation based project we looked at reciprocal and dependant relationships within these systems. In turn the studio would seek to transform this idea into one that could help us to develop a new transit hub on the metro line of LAX. Through a development of our understanding and reading of the airport as a collection of parts grafted over time, continuously evolving and changing as this micro urbanism, we sought to embody that in our expression of the project as grafted into the prexisting infrastructures in a way that introduces new program while also evolving what was already there in order for both to grow anew together.

baby devices



// the feeder

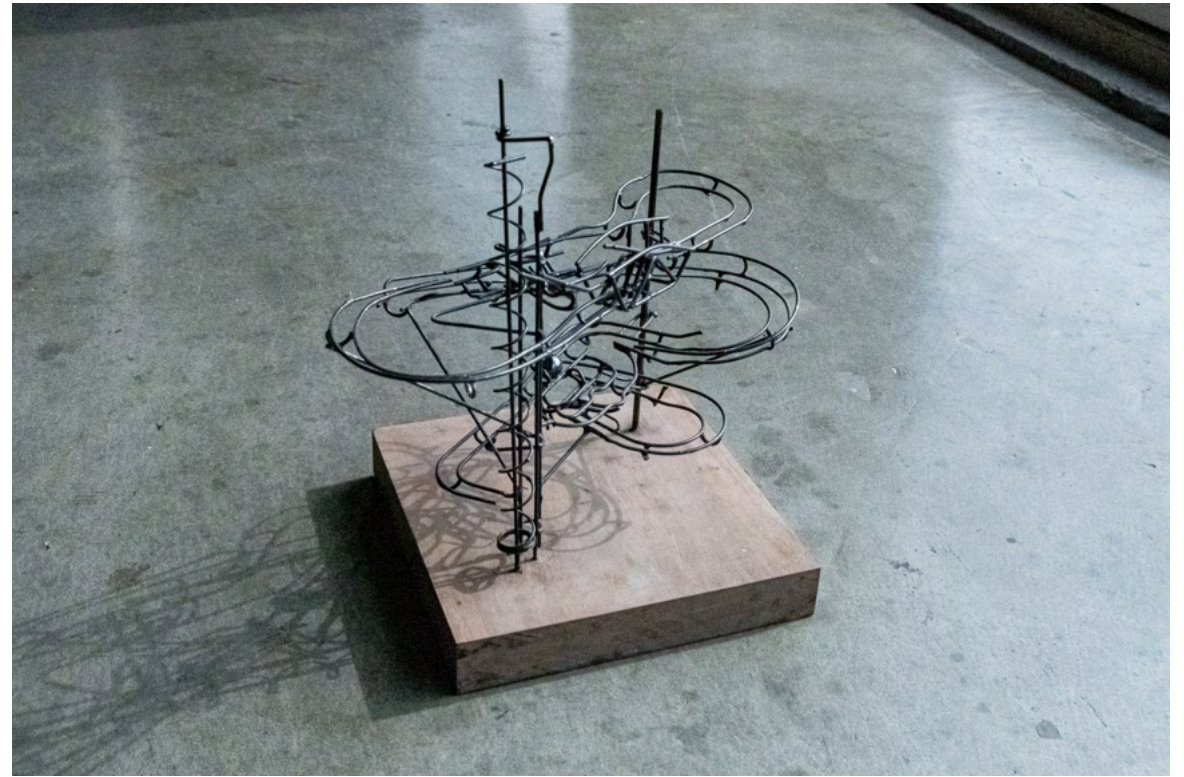


// multi ball tipping arm



06

07



// wire run



wire-y systems

a play of material interlocking



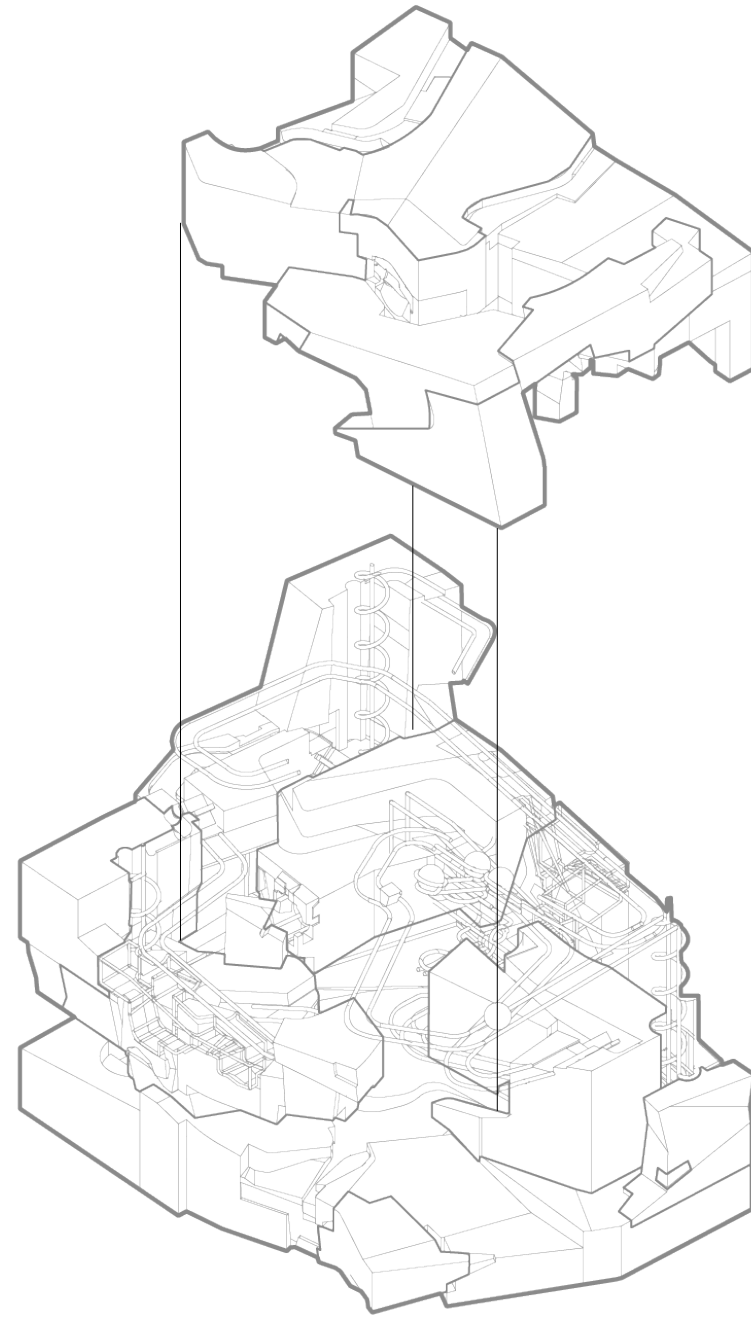
08

09

grafted connections



lets take a look under the hood

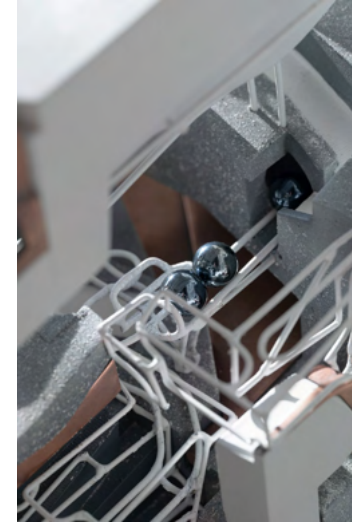


// volumetric run



10

11



// details details

closing in

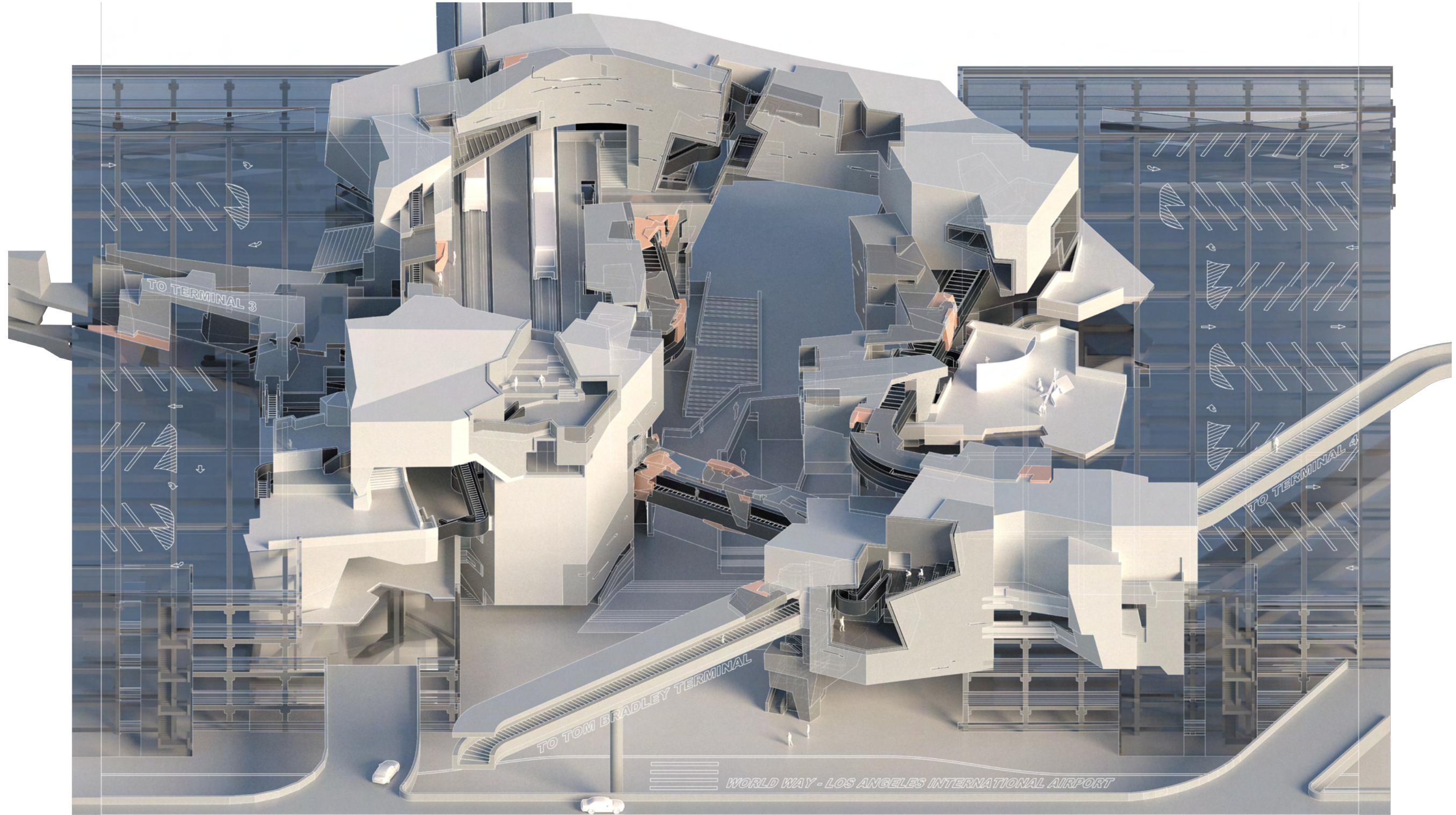


// see its inner workings



12

13



SCI-Arc

holland seropian

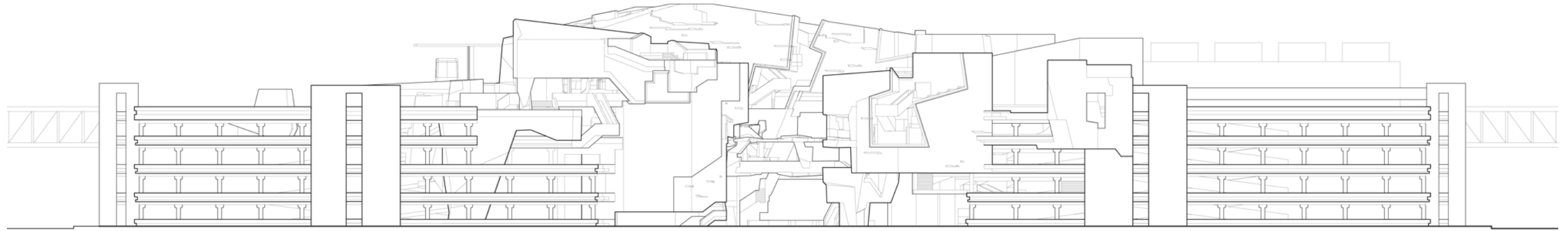
terminus

4B

holland seropian

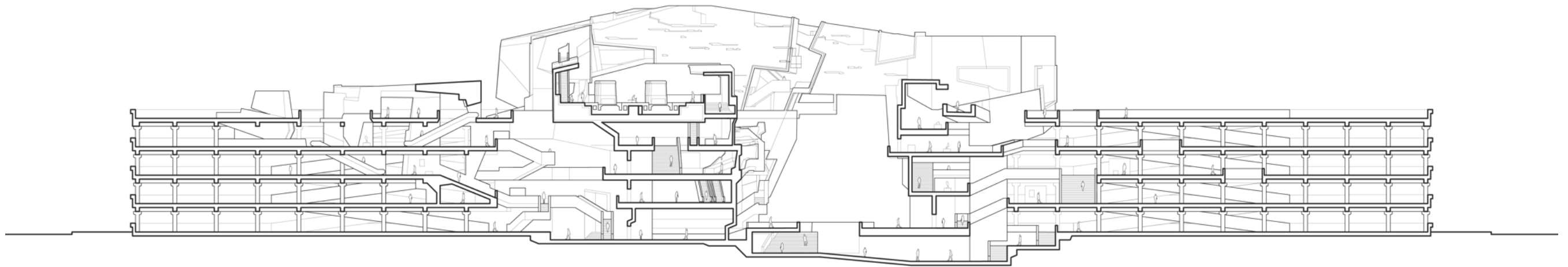
vertical studio

elevation



sectional

// tom bradley elevation



// chasm section



SCI-Arc

holland seropian

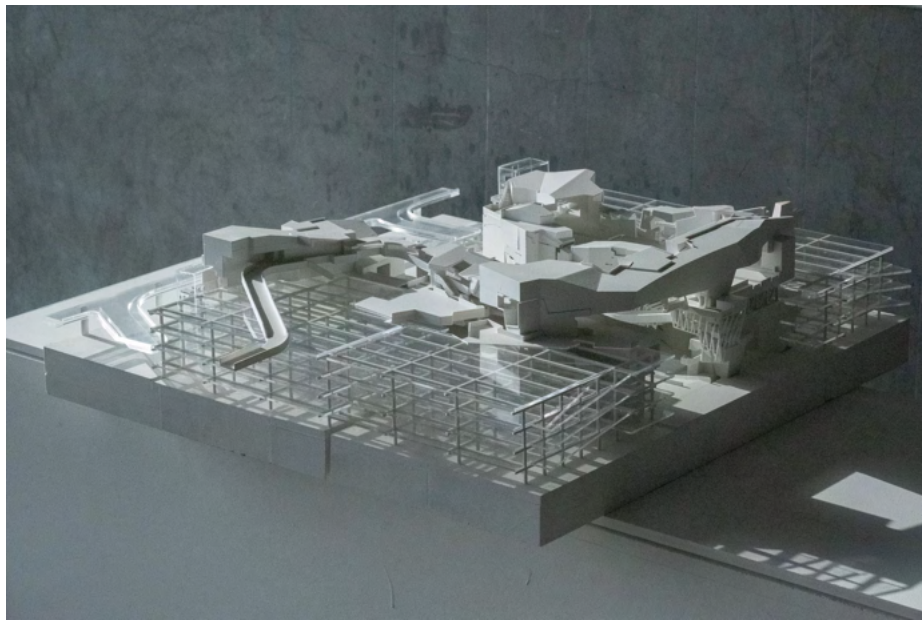
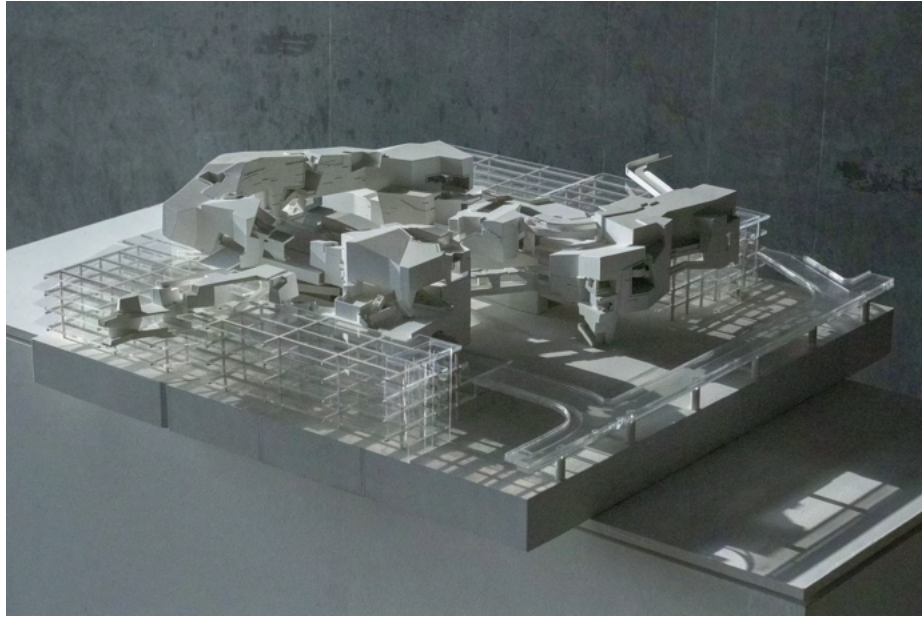
terminus

4B

holland seropian

vertical studio

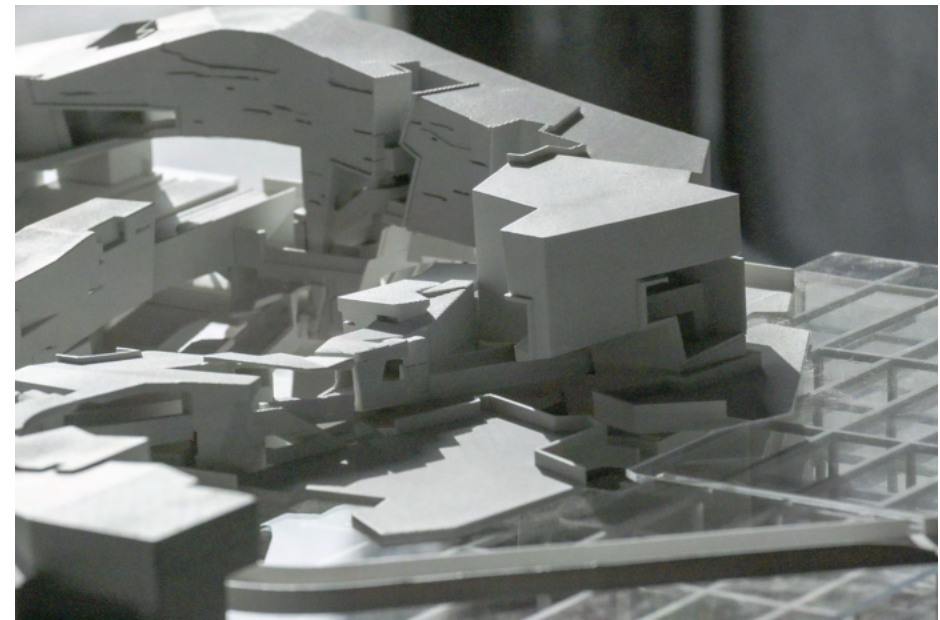
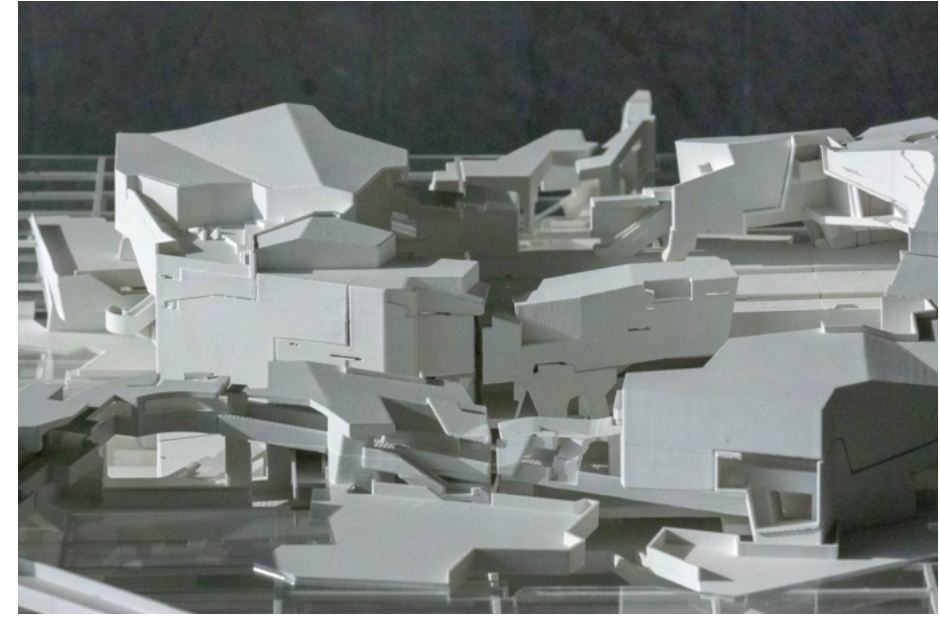
dramatic shadows for effect



┌┐

16

17

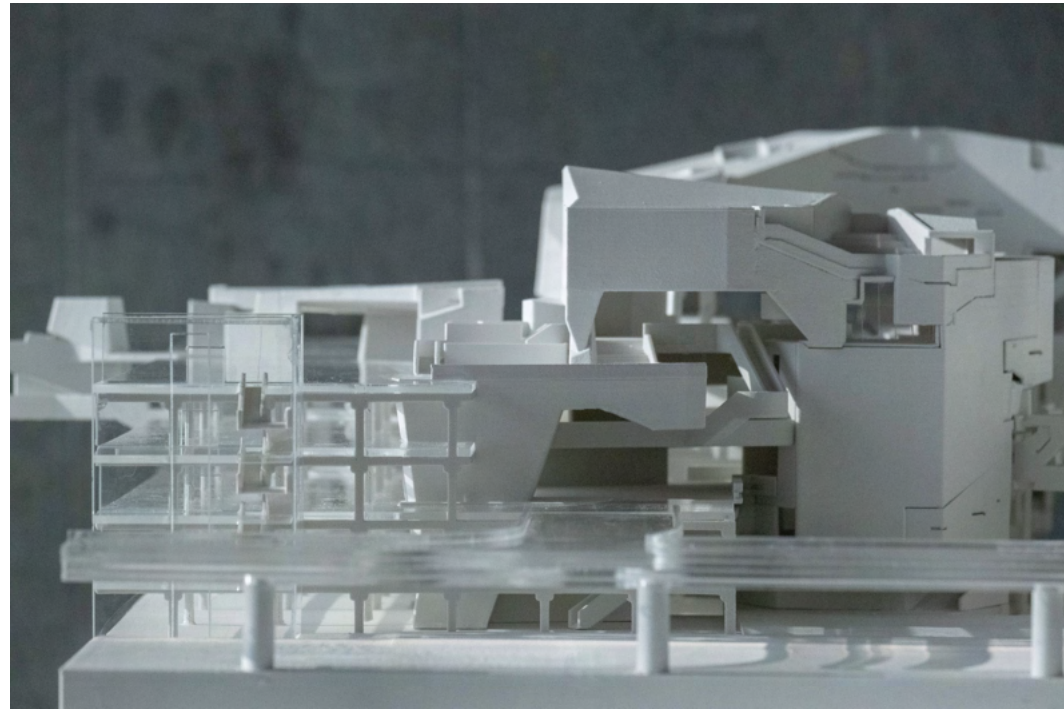


// details details

┌┐

a lot going on here

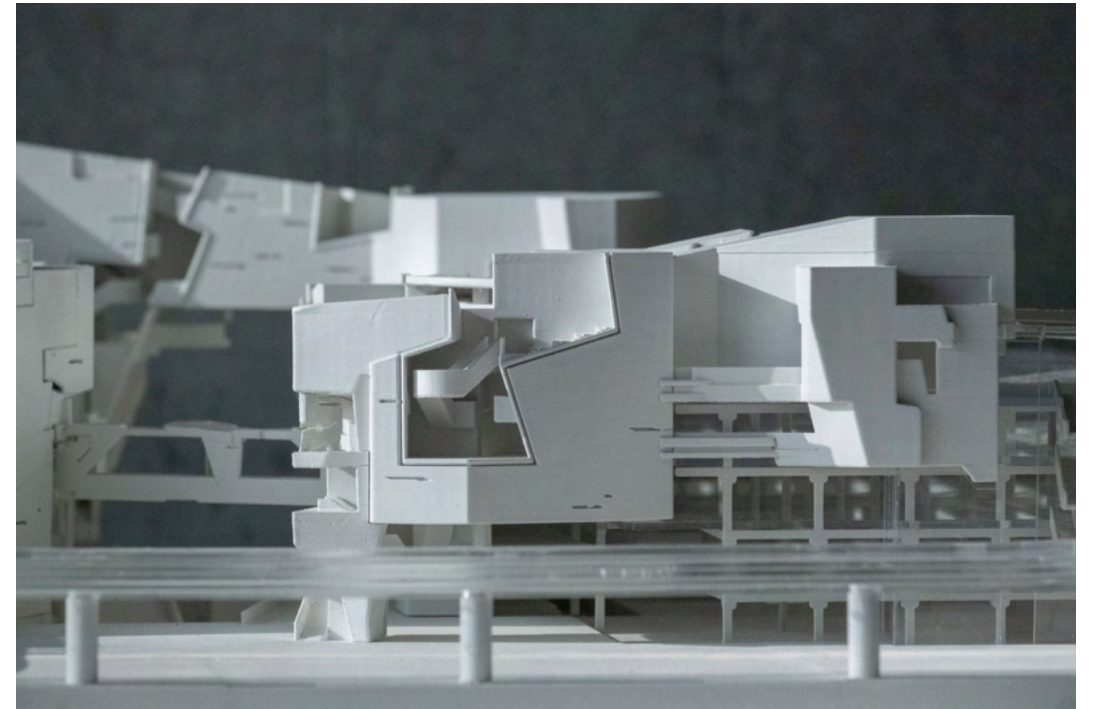
peek-a-boo



// station elevation

18

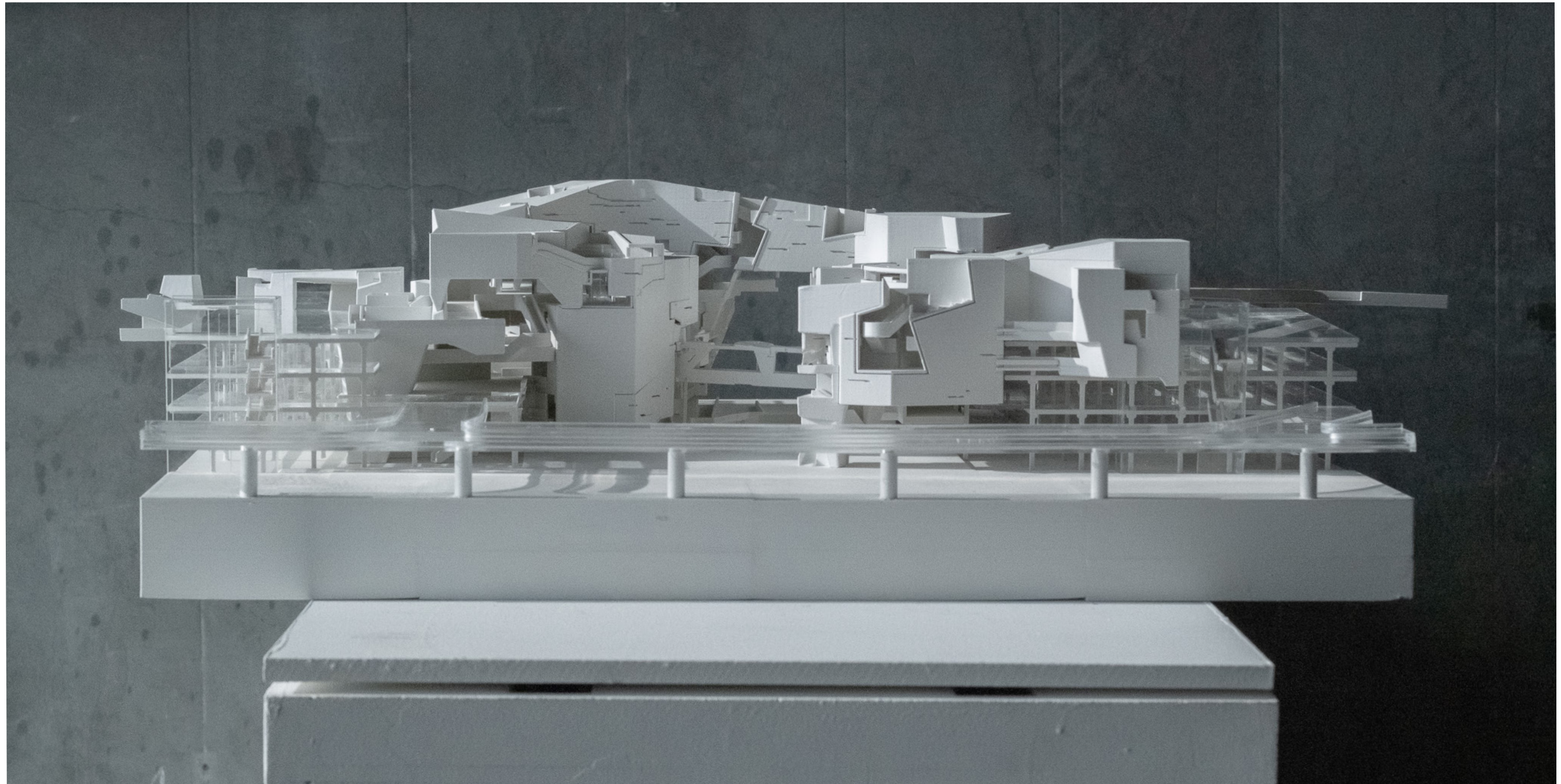
19



// garage gallery elevation

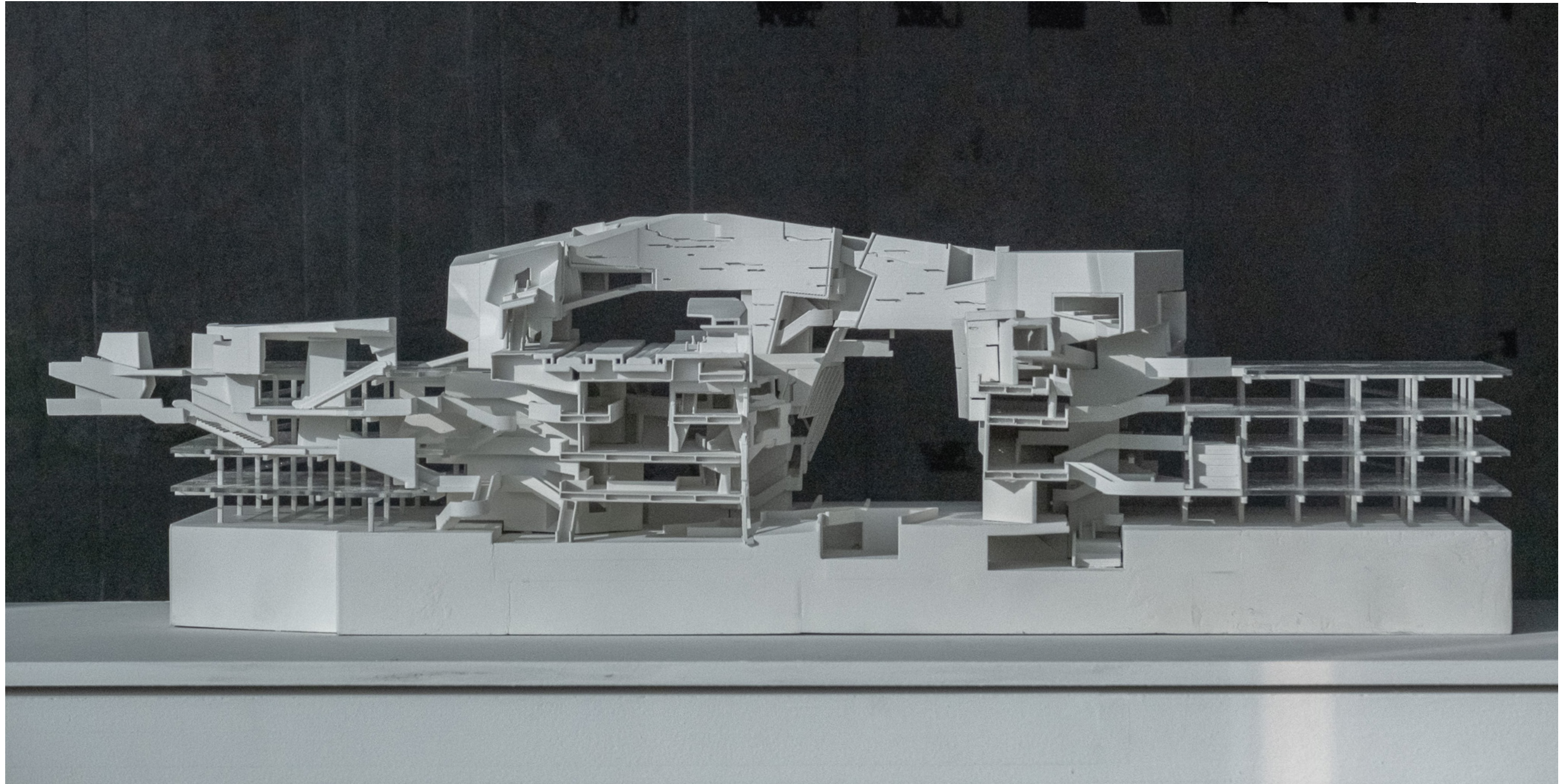
up and over





// front elevation





// overall section

02

SALAMANDER

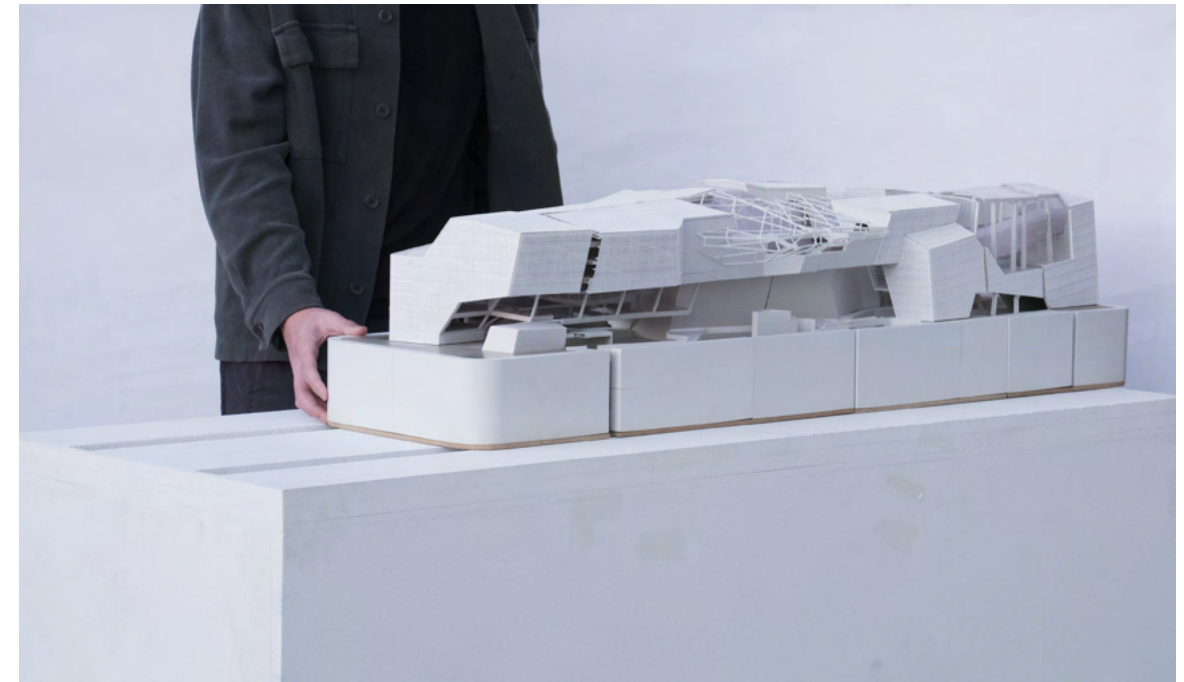
DS1040

POSITIONS

incongruous whole

24

25



an eclectic thing

// chunk drawing

Location: Venice, California

Instructor: Eric Owen Moss

Type: Environmental Research Lab +

Team: Zamen Lin

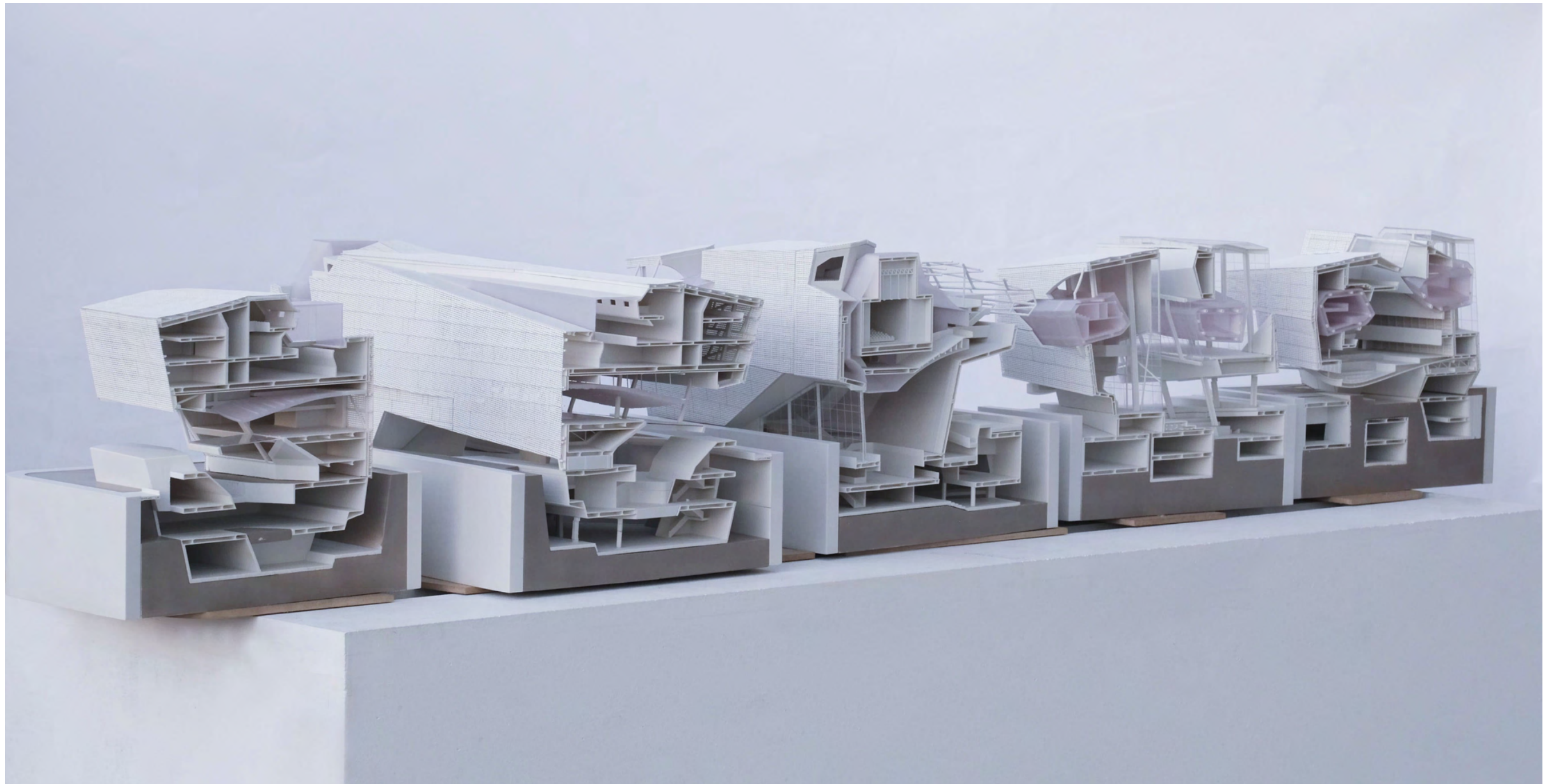
A + D Museum Design Award
2023, Student Category

Selected work for exhibition at
SCI-Arc Spring Show 2022



Contemporary urbanisms are rooted in intricate layers of history and temporality, with Venice, California exemplifying this as once a diverse wetland ecology and later as an eclectic fusion of prolific sub-cultures. These instances represent mere granules in time's striated nature, with past, present, and future possibilities collapsed into one.

upon the operating table



an autopsy takes place

// tom asunder



The project seeks to allegorically express the site's complexities, excavating meaning contextually and delimiting the site from its present temporal constraints. This forensic approach unearths potential latent relations and reframes programmatic organization in contextual response, catalyzing novel potentialities beyond preconception. By challenging disciplinary linear methodologies and subverting programmatic expectation, the project emphasizes the dynamic interrelation of disparate entities.

All things co-exist and are shaped by unseen forces, implying a realm of potential becoming. The project embodies disparate assemblages, welcoming the contingent and heterogeneous nature of unlikely programmatic groupings, pioneering forms and relationships. The expressions of these interactions, through imbrications, showcase their variety while seeding fecund potentialities. The intercalary programmatic elements create an expression that both obscures and emphasizes their external reading, embodied as an incongruent whole.

make sense?

28



Embodying the simultaneous coexistence of time and complex entanglements within ecologies, the project operates within a framework where all histories are drawn upon to develop a disciplinary foundation for potential extrapolation.

29

This eclectic assemblage serves as a tangible contradiction, manifesting both tension and harmony in a resolved modality. The ubiquitous difference in these elements highlights the power of a diverse, interconnected, and evolving architectural approach, where unique qualities are preserved in urbanities, and new possibilities are perpetually redefined.



// postured allegorical object

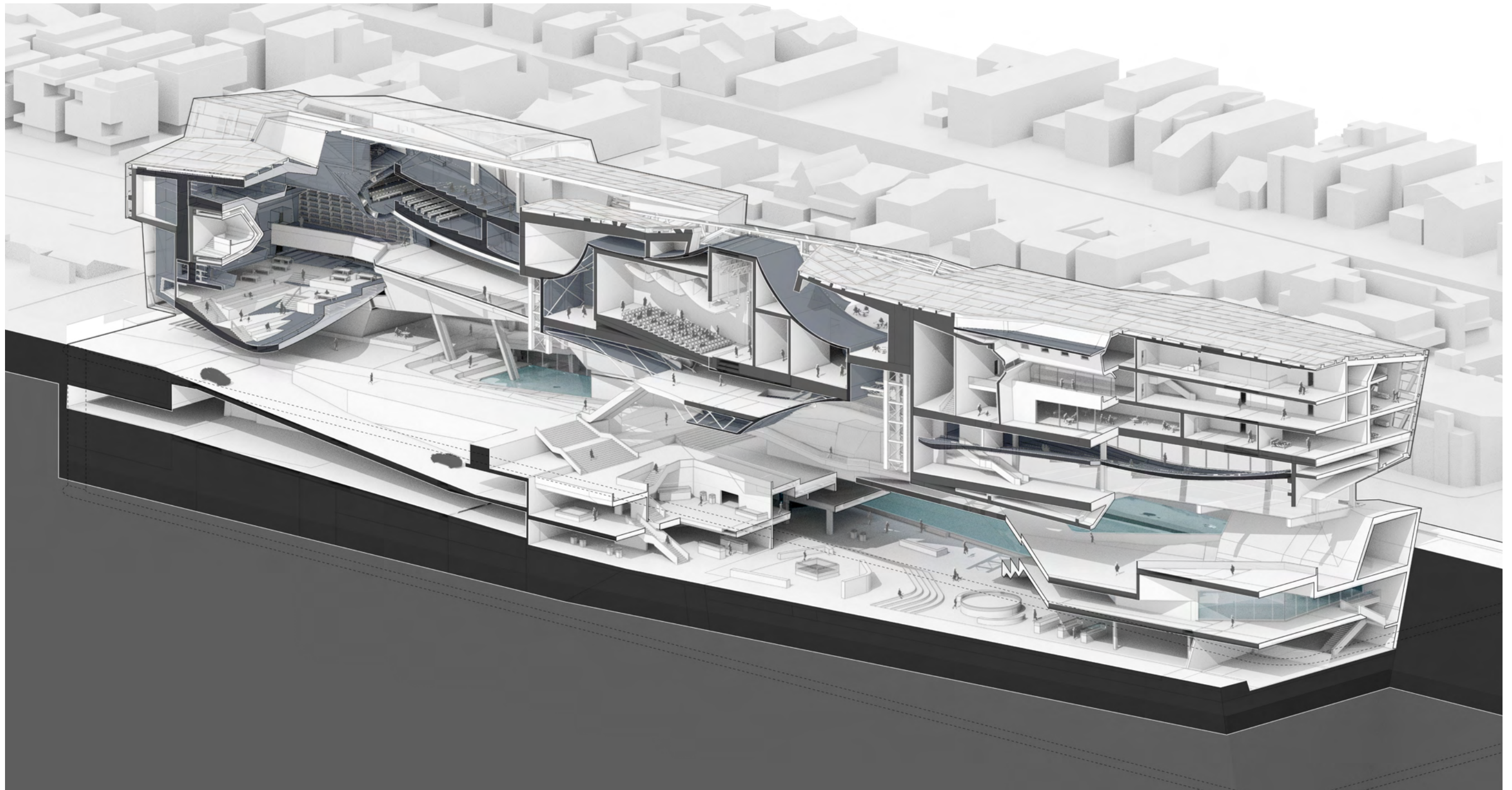


// crystal skull



asking questions, not answering them

30

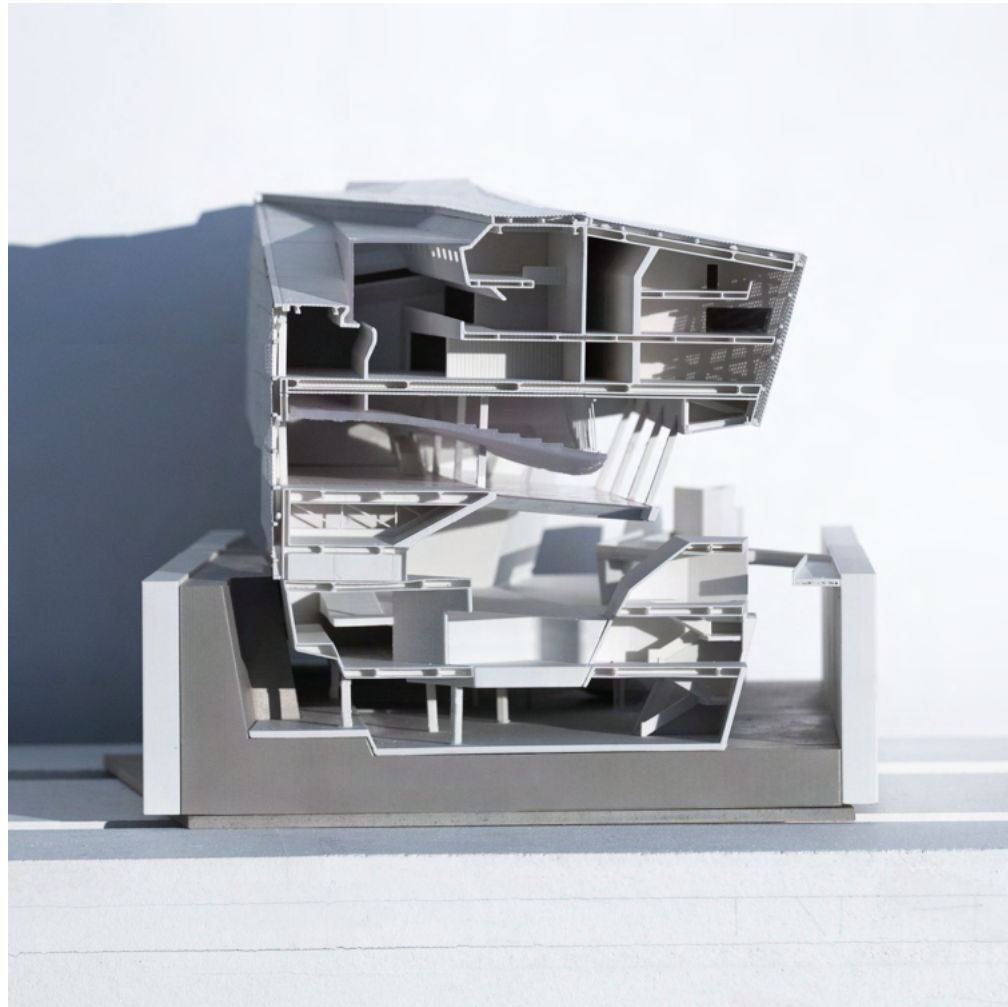


31

// anatomy section



above and below

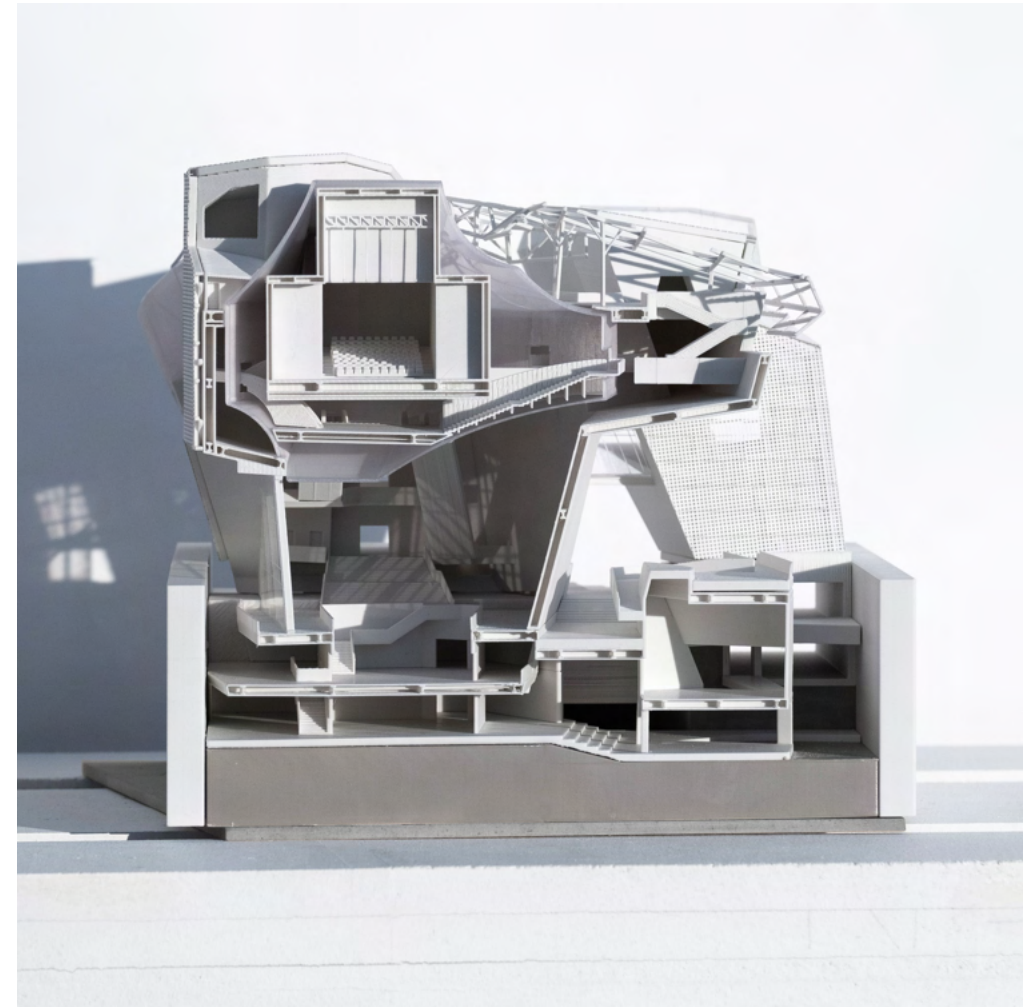


// housing + unground lab section



32

33



// theater + wetland museum section



uncontainable objects

snaking halls



// conference halls + growth labs section



34

35

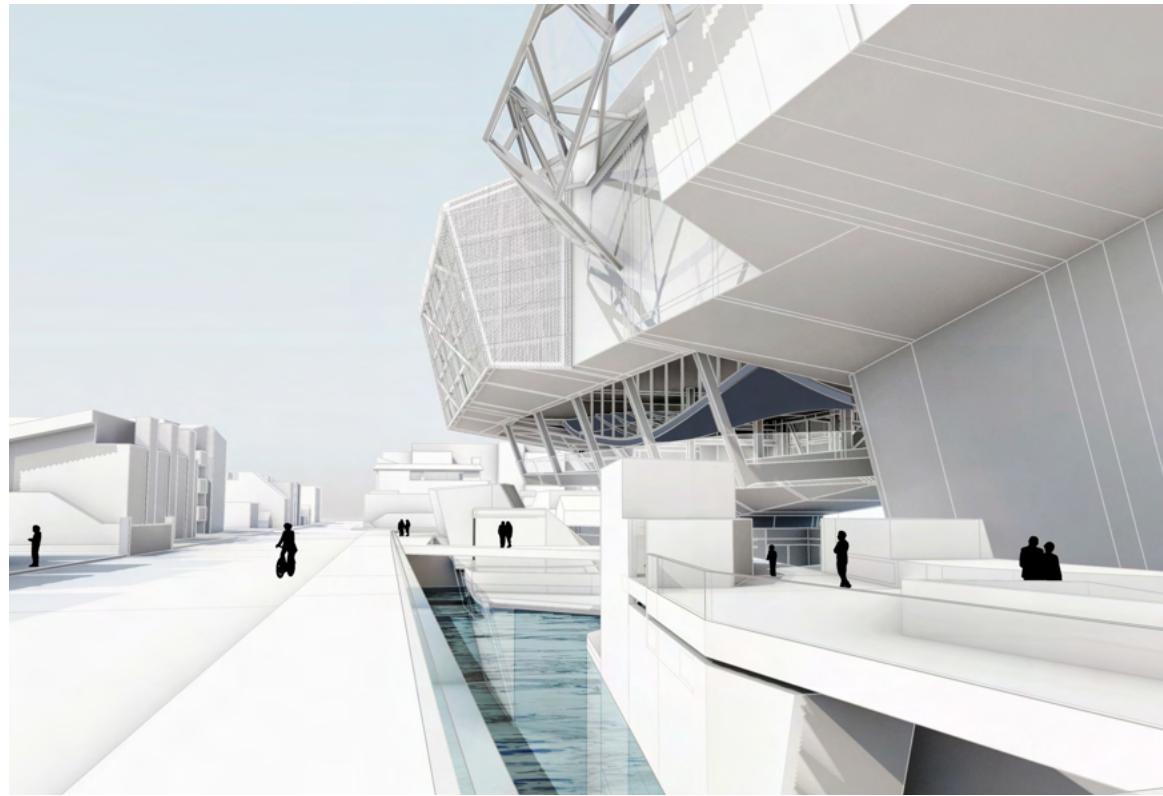


// library + growth labs section



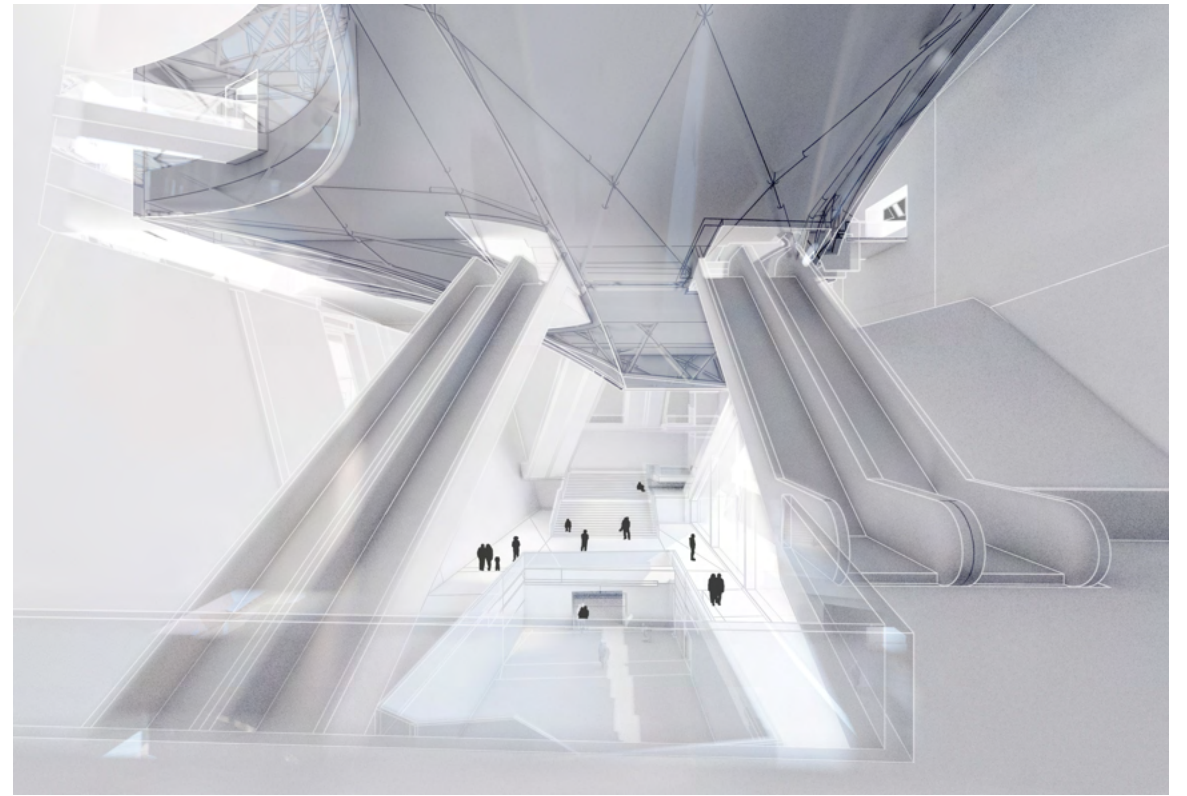
library collisions

dont fall in



36

37

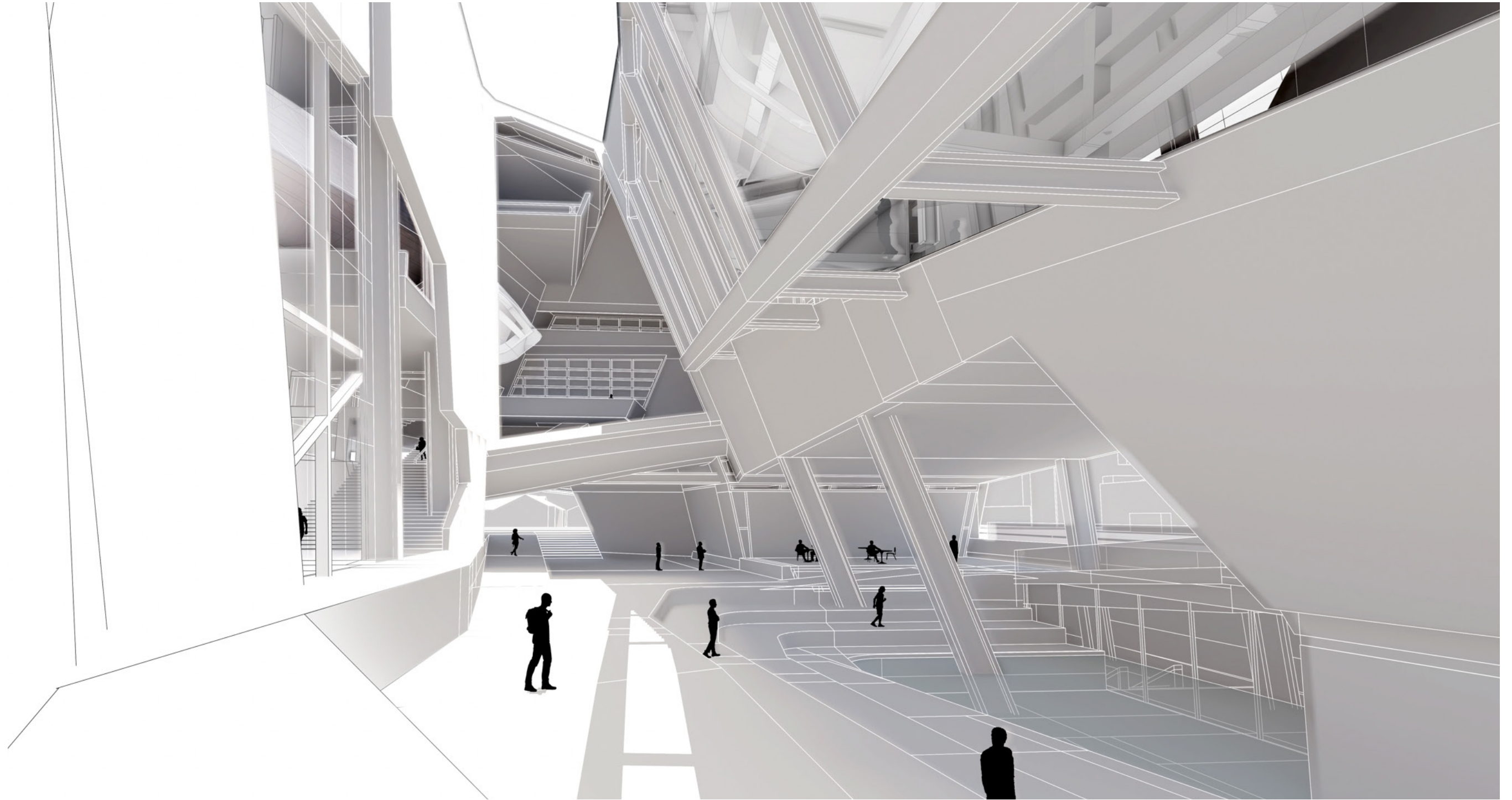


the mass, it beckons



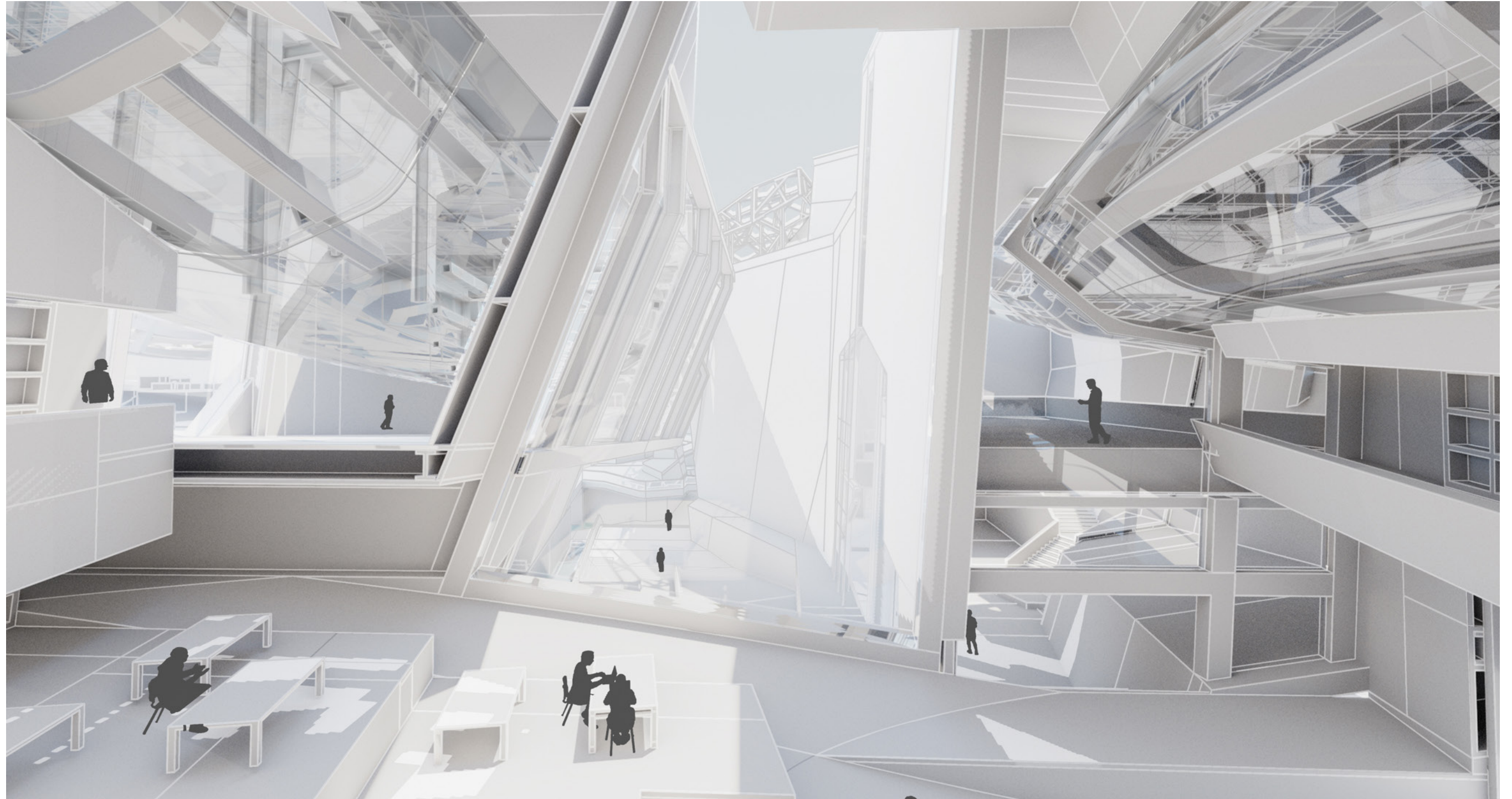
courtyard

wetland laboratories



// Courtyard Perspective

are people marbles?



im not so sure



// library interior

04

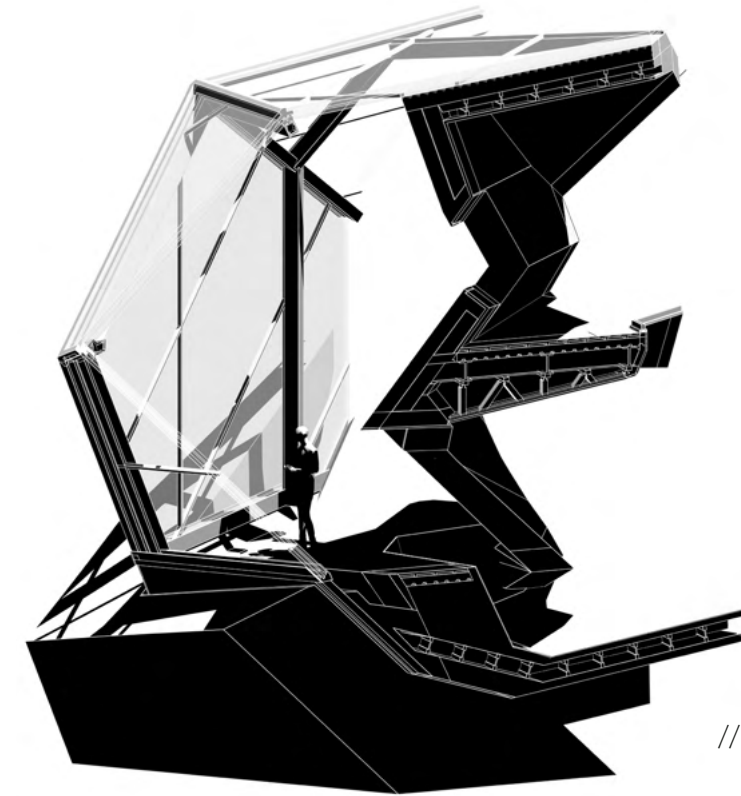
MIRAGE

VS2438

SOLAR OBJECTS

42

43



// chunk drawing

alluring tectonic effect

jagged edges

Location: Joshua Tree

Instructor: Marcelo Spina

Type: Refuge

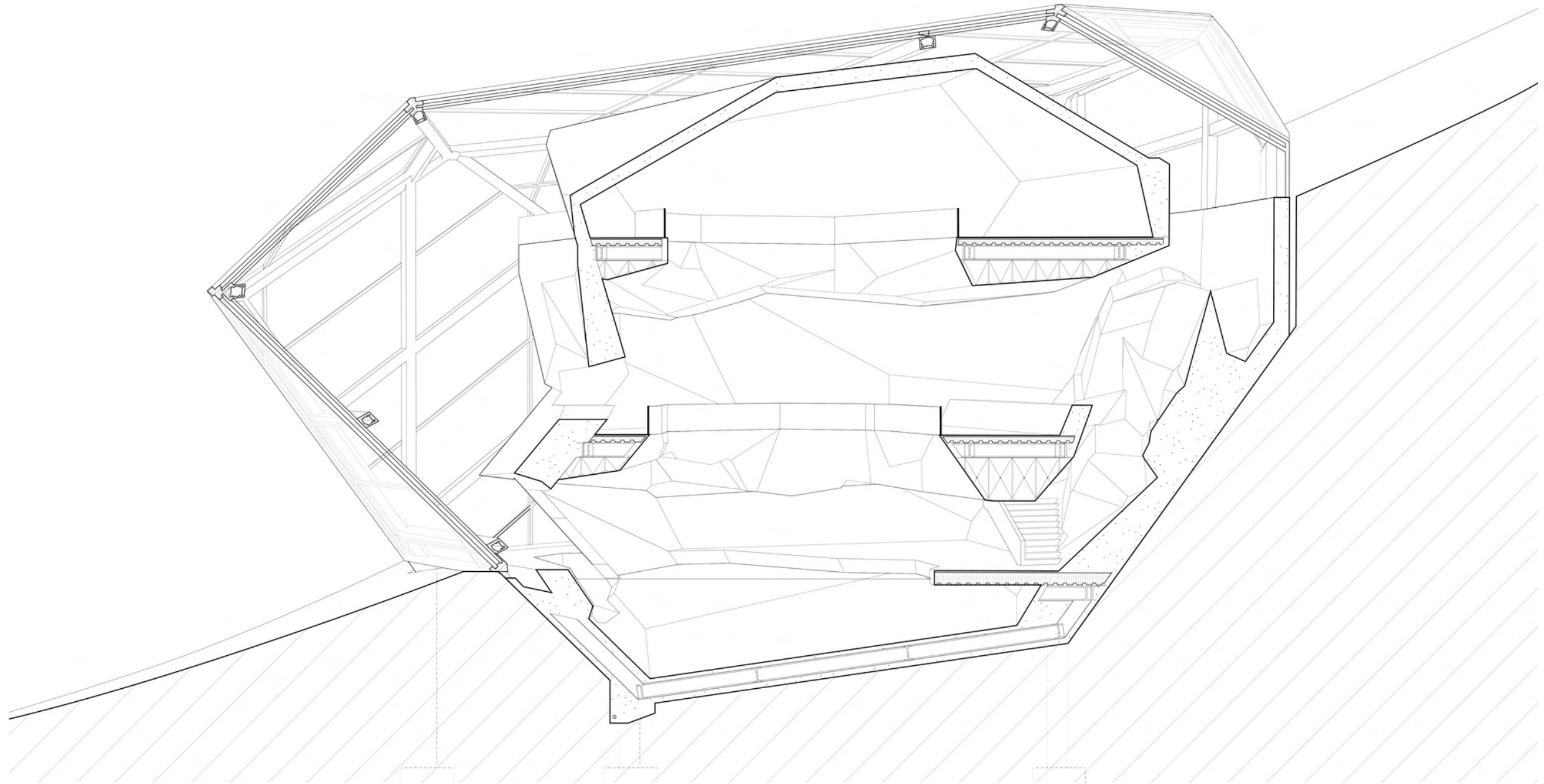
Team: Jacqueline Huang + Mateo Morales

Selected work for exhibition at
SCI-Arc Spring Show 2022

Intending to speculate on the aesthetic qualities of material and tectonics in the context of designing an energy producing object. Seeking beyond simply the deployment of passive and active systems, the project investigates the aesthetic intent these arrangements can maintain. The project exists as a dichotomous object, autonomous in its articulation and massing yet maintaining strong physical engagement with its ground.

The reflective shimmering exterior qualities of the projects gradient glass embedded photovoltaic facade both obfuscates and reveals. At the same time, the thickened object withdraws within its thin glass shell further nesting the interior space with a large central void. The interstitial space between the shell and mass acts as a sunspace where thermal mass planter beds and evaporation pools help to passively regulate internal temperature. This sunspace is also where air may cycle and flow between the trombe wall object as well as through the voids of the interior. The evaporation pool is fed through an exterior water collection system tied to the piercing rock feature at the stairs.

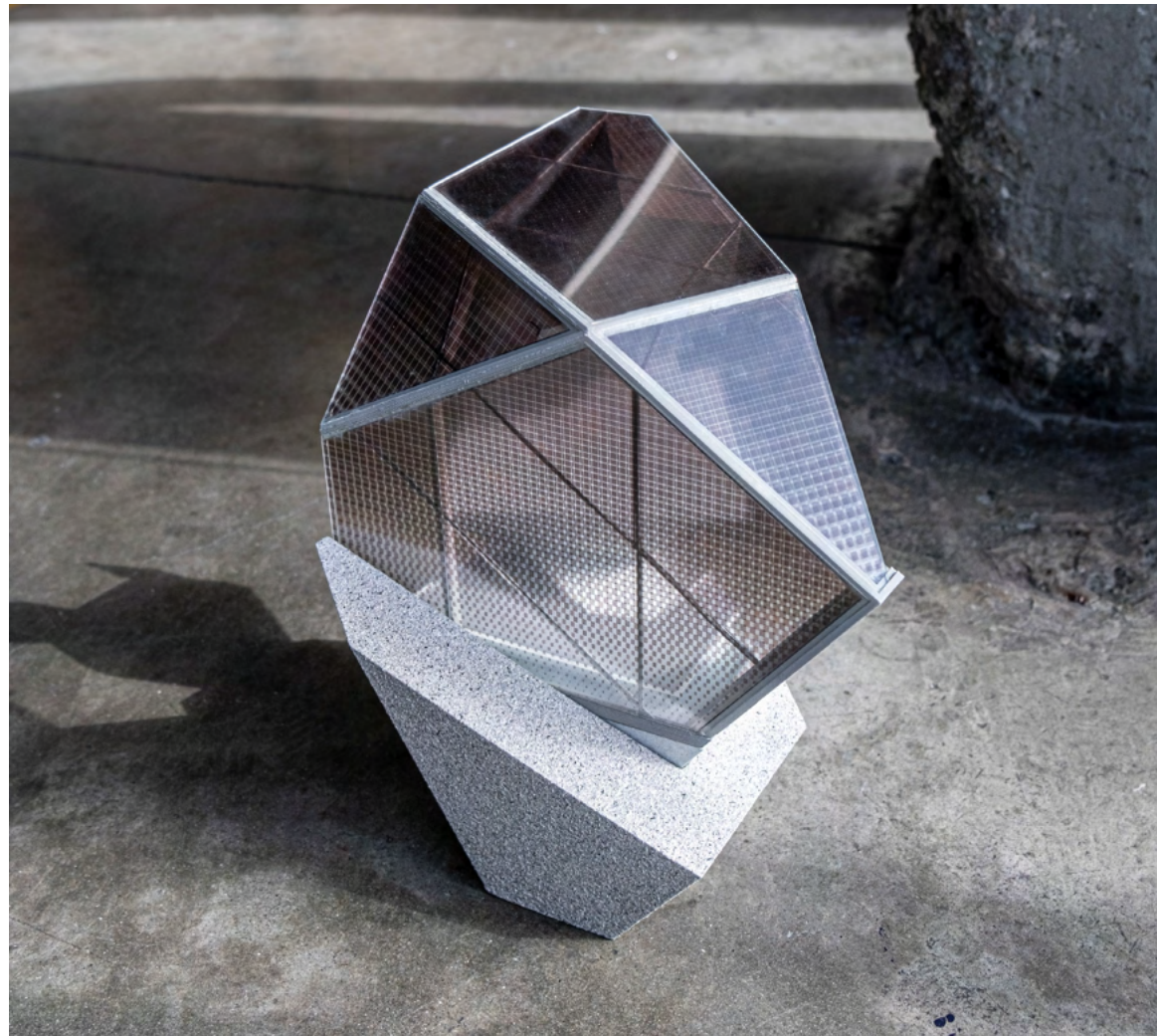




// overall section



mirage tectonics



// chunk model



46

47



// obscuring the mass

nesting objects



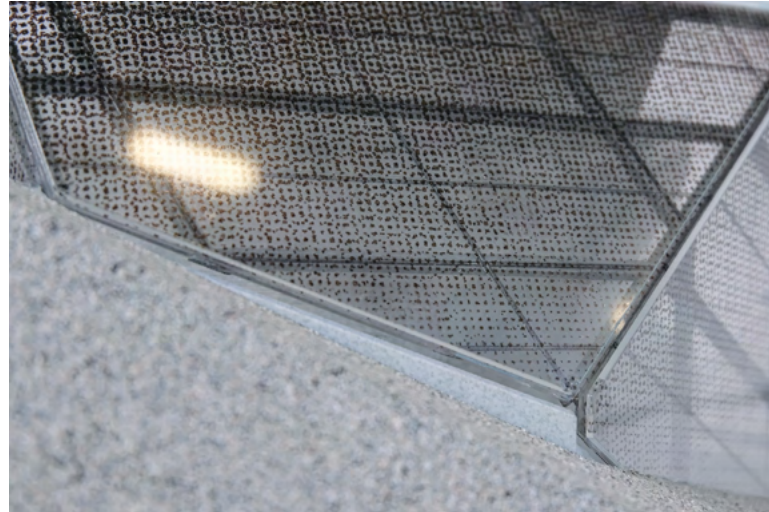
// revealing the mass



mirror mass



// figure in reflection

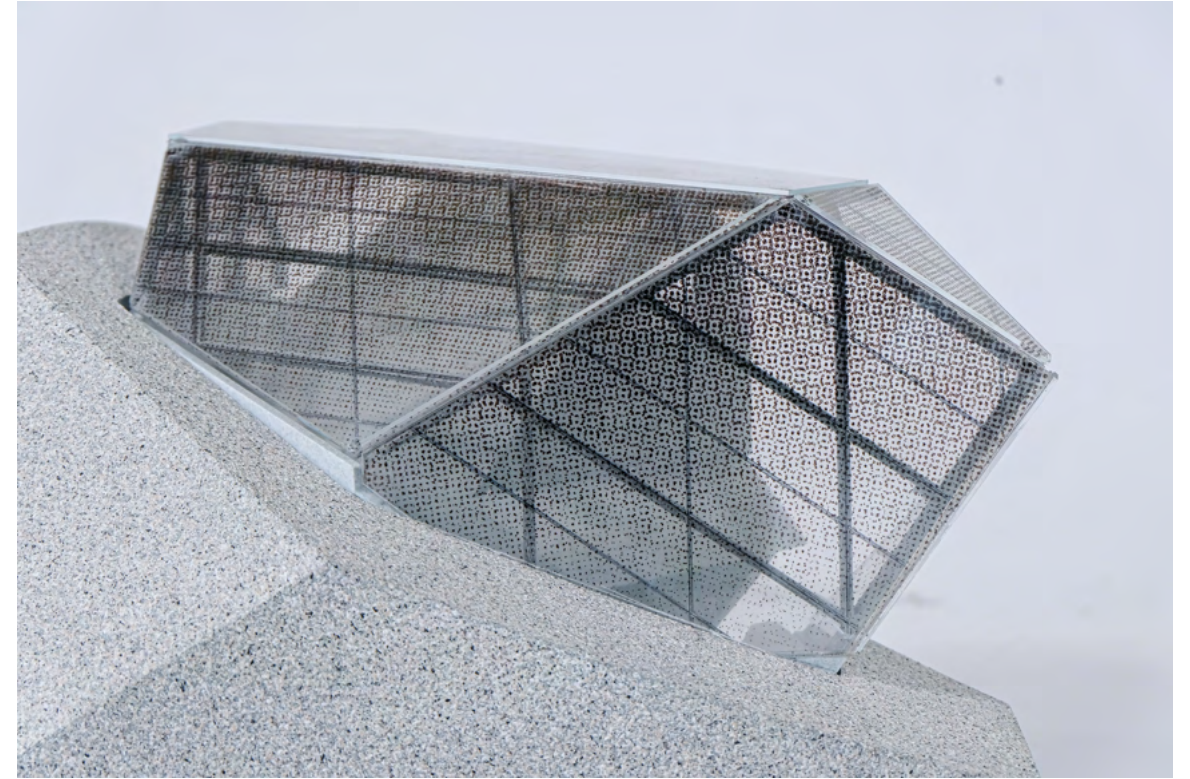


// obscuring the contained



48

49



// nosey

peeking profile

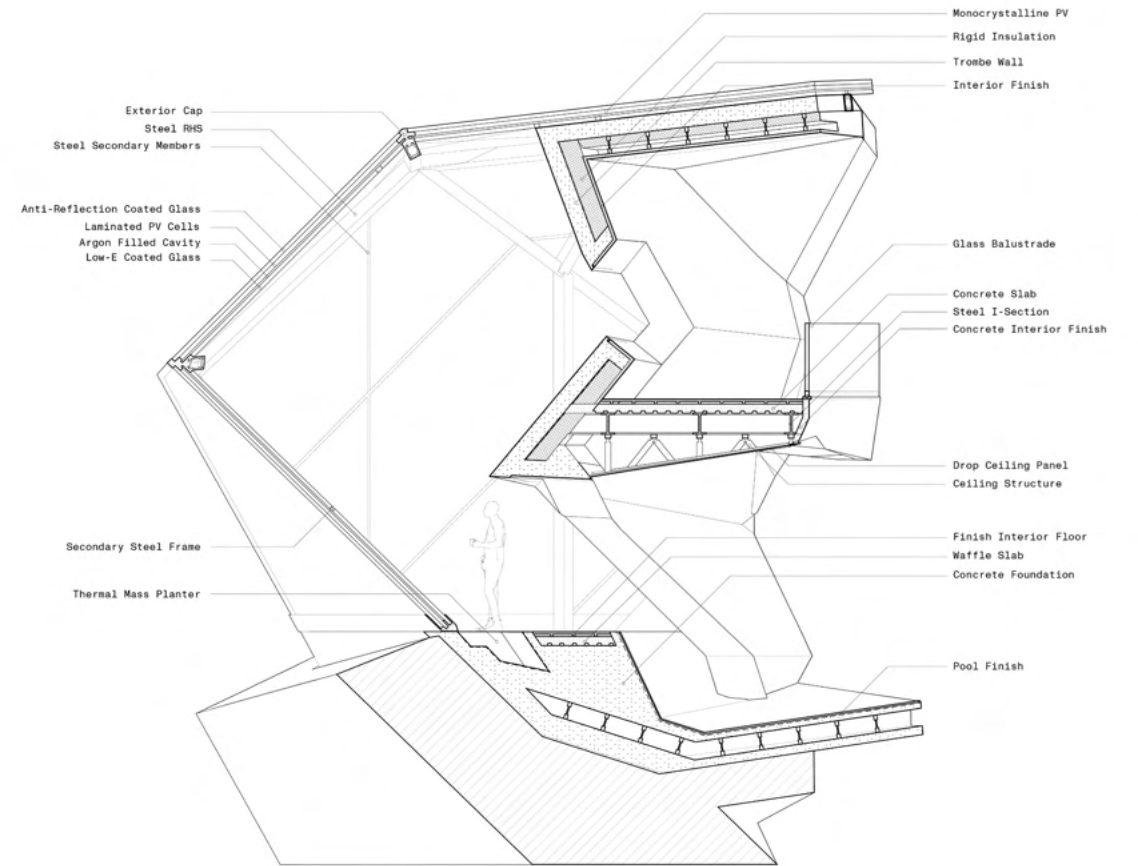


chunk model



50

51

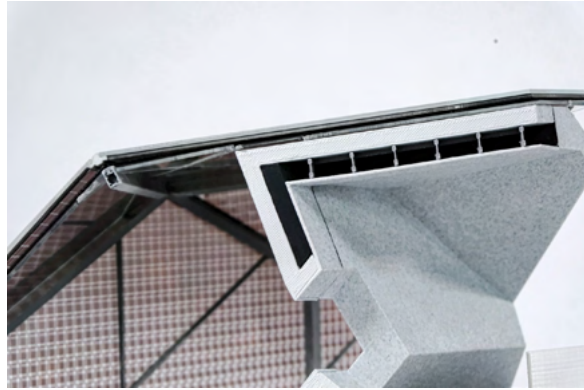


sharp nosed



// tectonic chunk

dismemberment



52



53

// close cuts



└┐



postured edges

// chunk drawing

└┐

05

CATENARY

AS2765

STEAM ODYSSEY

With the radical emergence and commercialization of Augmented Reality (AR) technology in recent years, there has arisen a coinciding speculation of its use in design and fabrication. As the role of the human in design and fabrication becomes less certain, some advocate its erasure while others solely champion the traditional. Catenary seeks a rejection of this false dichotomy and instead embraces the use of such technologies in a way that relinquishes neither. In the process of doing so, traditional craftsmanship is enhanced as the intuitive hand is guided by the precision of intelligent holographic guides, empowered to form a decisive stance in the technologies ongoing development.

Instructor: Soomeen Hahm

Type: Stair prototype

Team: Jacqueline Huang

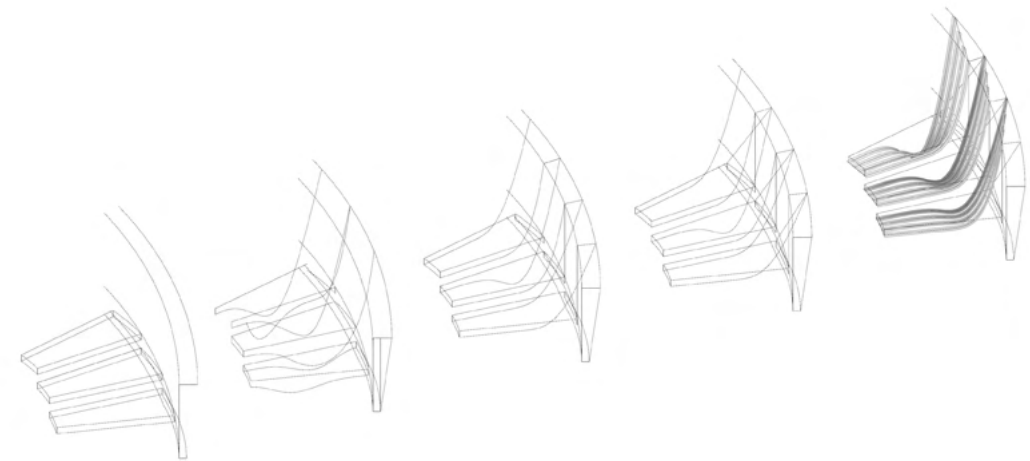
Selected work for exhibition at
SCI-Arc Spring Show 2022



rigid fluidity

54

55



sweeps + sinews

watch your step



56

57



step up



sweeps



58

59



sinews



// details

